

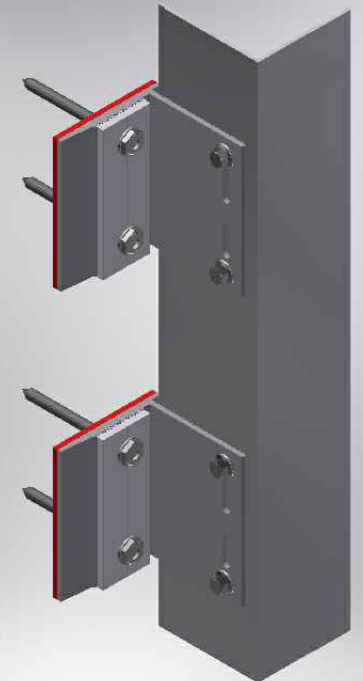
# ENCLAD<sup>TM</sup> SOLID SHEET \*

## ENCLAD<sup>TM</sup> EN01 SUPPORT SYSTEM

### DISCREET FIXED

#### DRAWING REGISTER

| PAGE  | DETAIL DESCRIPTION                           | DETAIL # | REV.   |
|-------|--|----------|--------|
| 00/16 | COVER PAGE                                   | 00       | NOV 22 |
| 01/16 | CAVITY SET OUT                               | 01       | NOV 22 |
| 02/16 | SCHEMATIC                                    | 02       | NOV 22 |
| 03/16 | VERTICAL PANEL JOINT DETAIL (PLAN VIEW)      | 03       | NOV 22 |
| 04/16 | BRICKWALL ABUTMENT DETAIL (PLAN VIEW)        | 04       | NOV 22 |
| 05/16 | INTERNAL CORNER PANEL DETAIL (PLAN VIEW)     | 05       | NOV 22 |
| 06/16 | EXTERNAL CORNER PANEL DETAIL (PLAN VIEW)     | 06       | NOV 22 |
| 07/16 | WINDOW JAMB DETAIL (PLAN VIEW)               | 07       | NOV 22 |
| 08/16 | DOOR JAMB DETAIL (PLAN VIEW)                 | 08       | NOV 22 |
| 09/16 | CONCRETE WALL ABUTMENT DETAIL (PLAN VIEW)    | 09       | NOV 22 |
| 10/16 | HORIZONTAL PANEL JOINT DETAIL (SECTION VIEW) | 10       | NOV 22 |
| 11/16 | PARAPET FLASHING DETAIL (SECTION VIEW)       | 11       | NOV 22 |
| 12/16 | WINDOW HEAD DETAIL (SECTION VIEW)            | 12       | NOV 22 |
| 13/16 | DOOR HEAD DETAIL (SECTION VIEW)              | 13       | NOV 22 |
| 14/16 | WINDOW SILL DETAIL (SECTION VIEW)            | 14       | NOV 22 |
| 15/16 | BRICKWALL AT BASE DRIP DETAIL (SECTION VIEW) | 15       | NOV 22 |
| 16/16 | JOINT DETAIL OPTIONS (PLAN VIEW)             | 16       | NOV 22 |



#### \* SOLID SHEET OPTIONS

- SOLID ALUMINIUM
- ALUCOLUX®
- PERFORATED ALUMINIUM
- STAINLESS STEEL
- COPPER
- SOLID ZINC

Cladding Type :

**ENCLAD<sup>TM</sup> SOLID SHEET \***

Support System :

**ENCLAD<sup>TM</sup> EN01 - DISCREET FIXED**

Detail Description :

COVER PAGE

Scale @ A3 :

Rev. : NOV 2022

System # :

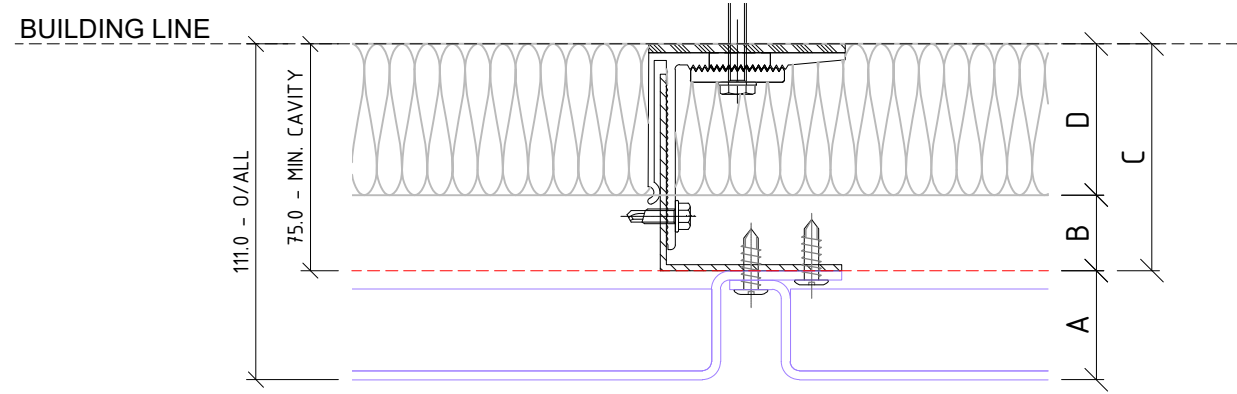
SS-EN01-DF1

Detail # :

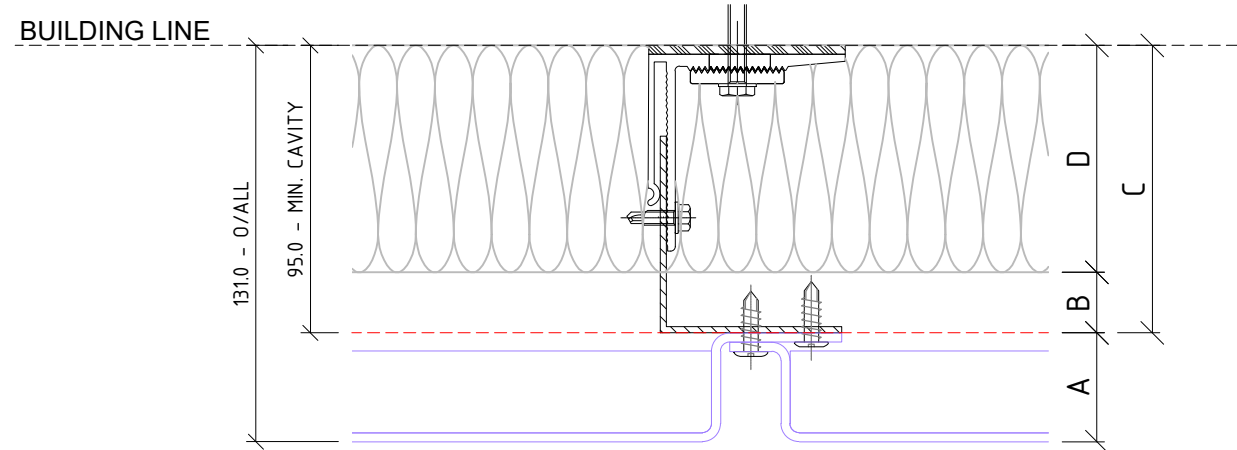
00

**ENCLAD<sup>TM</sup> RAINSCREEN SYSTEMS**

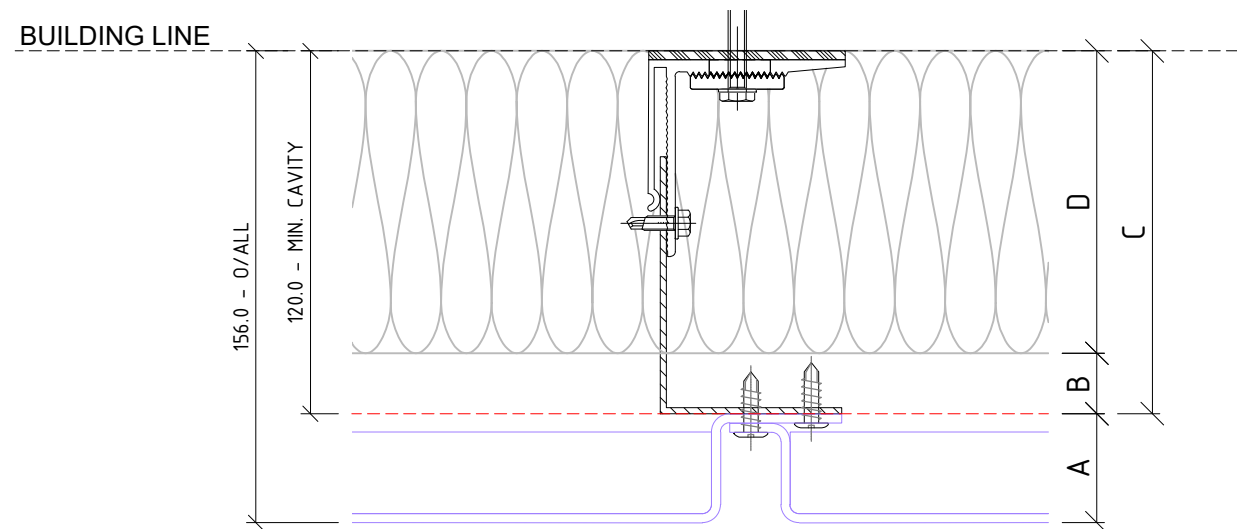
EN01 - ADJUSTABLE SYSTEM CAVITY



50mm THICK INSULATION  
IN CAVITY ZONE



75mm THICK INSULATION  
IN CAVITY ZONE



100mm THICK INSULATION  
IN CAVITY ZONE

01 CAVITY SET OUT  
ENCLAD™ SOLID SHEET \*

ADJUSTABLE SYSTEMS ACCOMODATE BUILDING TOLERANCE AND INCORPORATION OF INSULATION FOR H1 REQUIREMENTS - STANDARD SYSTEM CAVITY SHOWN - BESPOKE OPTIONS AVAILABLE FOR PROJECT SPECIFIC REQUIREMENTS

PART OF THE THERMOSASH GROUP COMPANIES :



**COPYRIGHT :** THESE DESIGNS, DETAILS AND/OR SPECIFICATIONS AND THE COPYRIGHT THEREIN, REMAIN THE PROPERTY OF INSITE FACADES LTD.

**DISCLAIMER :** THESE DETAILS ARE PROVIDED FOR INDICATIVE PURPOSES ONLY. CONSTRUCTION/SYSTEM DETAILS CAN VARY DEPENDING ON PROJECT SPECIFIC SPECIFICATION AND ENGINEERING REQUIREMENTS. THE DESIGNER IS RESPONSIBLE FOR ENSURING DETAILS SATISFY ALL NEW ZEALAND BUILDING CODE CLAUSES. THE DESIGNER IS RESPONSIBLE FOR ENSURING BUILDING WRAPS, FIRESTOPS AND INSULATION/SPECIFICATION COMPLY WITH MANUFACTURERS RECOMMENDATIONS AND NZBC REGULATIONS. REFER TO INSITE WEBSITE FOR FULL TERMS AND CONDITIONS.

**LEGEND**

|    |  |
|----|--|
| A  | ENCLAD™ SOLID SHEET *  |
| B  | 20mm - 25mm NOMINAL VENTILATION ZONE (AIR GAP)   |
| C  | ** 75mm SYSTEM CAVITY TO ACCOMMODATE 50mm THICK INSULATION   |
| D  | ** 50mm INSULATION (OPTION BY INSITE)<br>FIRE STOP (OPTION BY INSITE)  |
| ** | OTHER OPTIONS AVAILABLE (PROJECT SPECIFIC)<br>95mm SYSTEM CAVITY FOR 75mm THICK INSULATION<br>120mm SYSTEM CAVITY FOR 100mm THICK INSULATION |

**\* SOLID SHEET OPTIONS**

|   |                      |
|---|----------------------|
| • | SOLID ALUMINIUM      |
| • | ALUCOLUX®            |
| • | PERFORATED ALUMINIUM |
| • | STAINLESS STEEL      |
| • | COPPER               |
| • | SOLID ZINC           |

Cladding Type :

**ENCLAD™ SOLID SHEET \***

Support System :

**ENCLAD™ EN01 - DISCREET FIXED**

Detail Description :

CAVITY SETOUT (PLAN VIEW)

Scale @ A3 : 1:2.5

Rev. : NOV 2022

System # :

SS-EN01-DF1

Detail # :

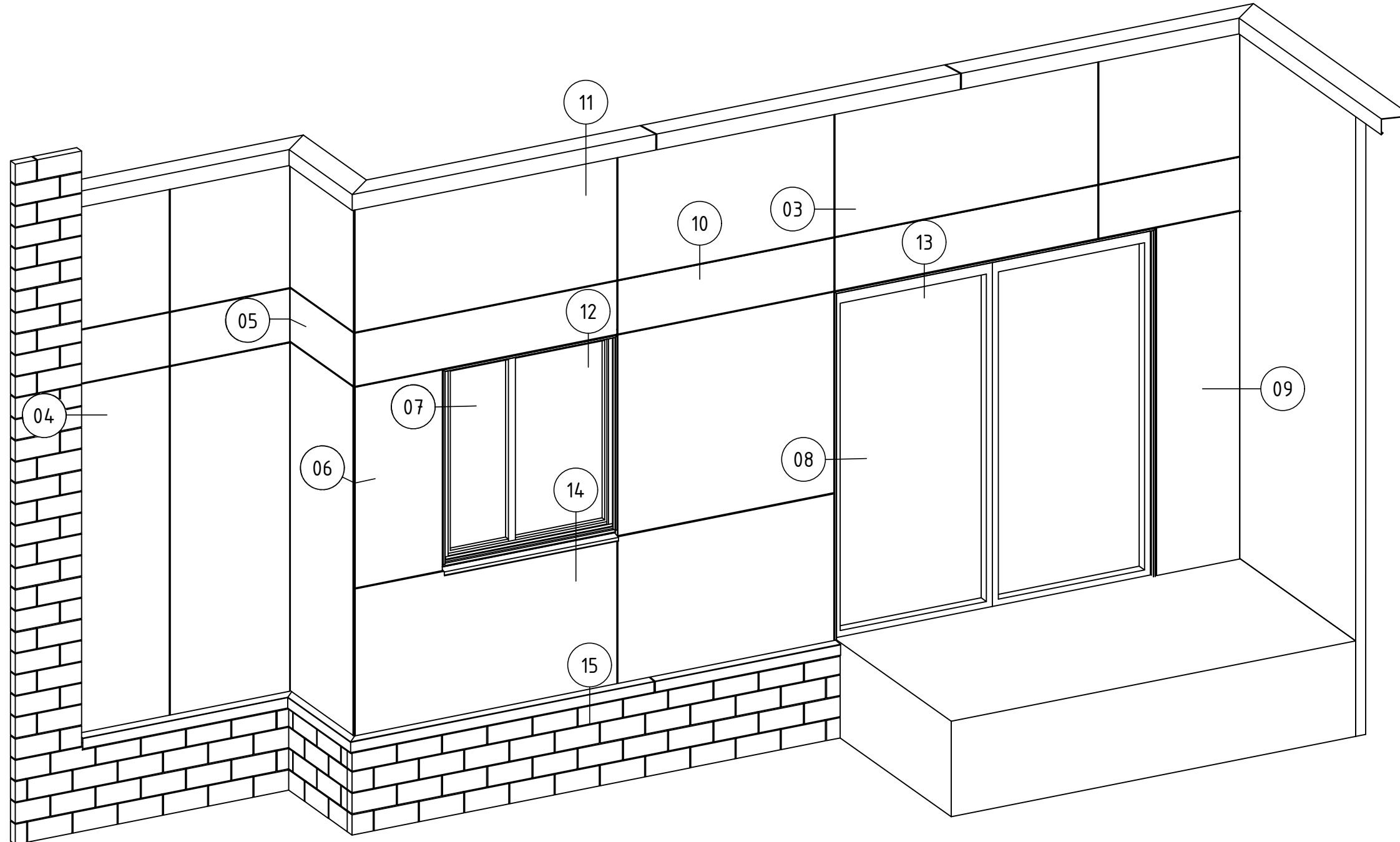
01

**ENCLAD™ RAINSCREEN SYSTEMS**



101 STATION ROAD, PENROSE,  
AUCKLAND 1061  
NEW ZEALAND

P: +64 9 307 1529  
www.insitefacades.co.nz



02 SCHEMATIC  
ENCLAD™ SOLID SHEET \*

**\* SOLID SHEET OPTIONS**

- SOLID ALUMINIUM
- ALUCOLUX®
- PERFORATED ALUMINIUM
- STAINLESS STEEL
- COPPER
- SOLID ZINC

Cladding Type :  
**ENCLAD™ SOLID SHEET \***

Support System :  
**ENCLAD™ EN01 - DISCREET FIXED**

Detail Description :  
SCHEMATIC

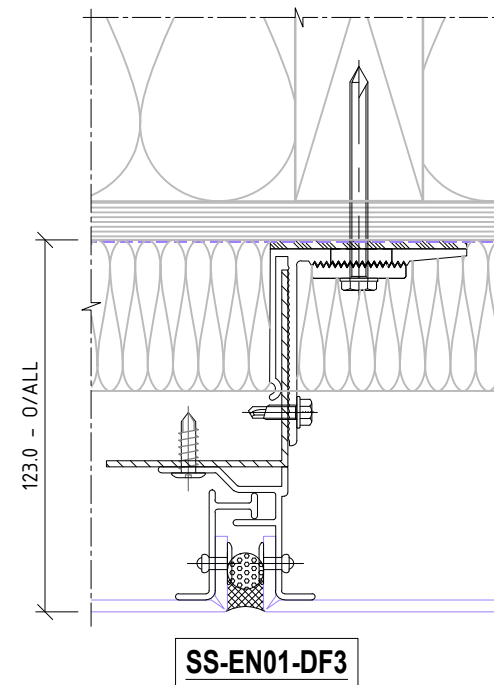
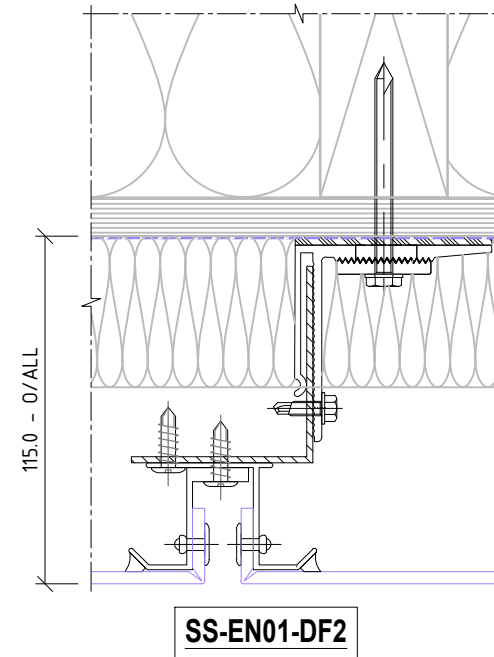
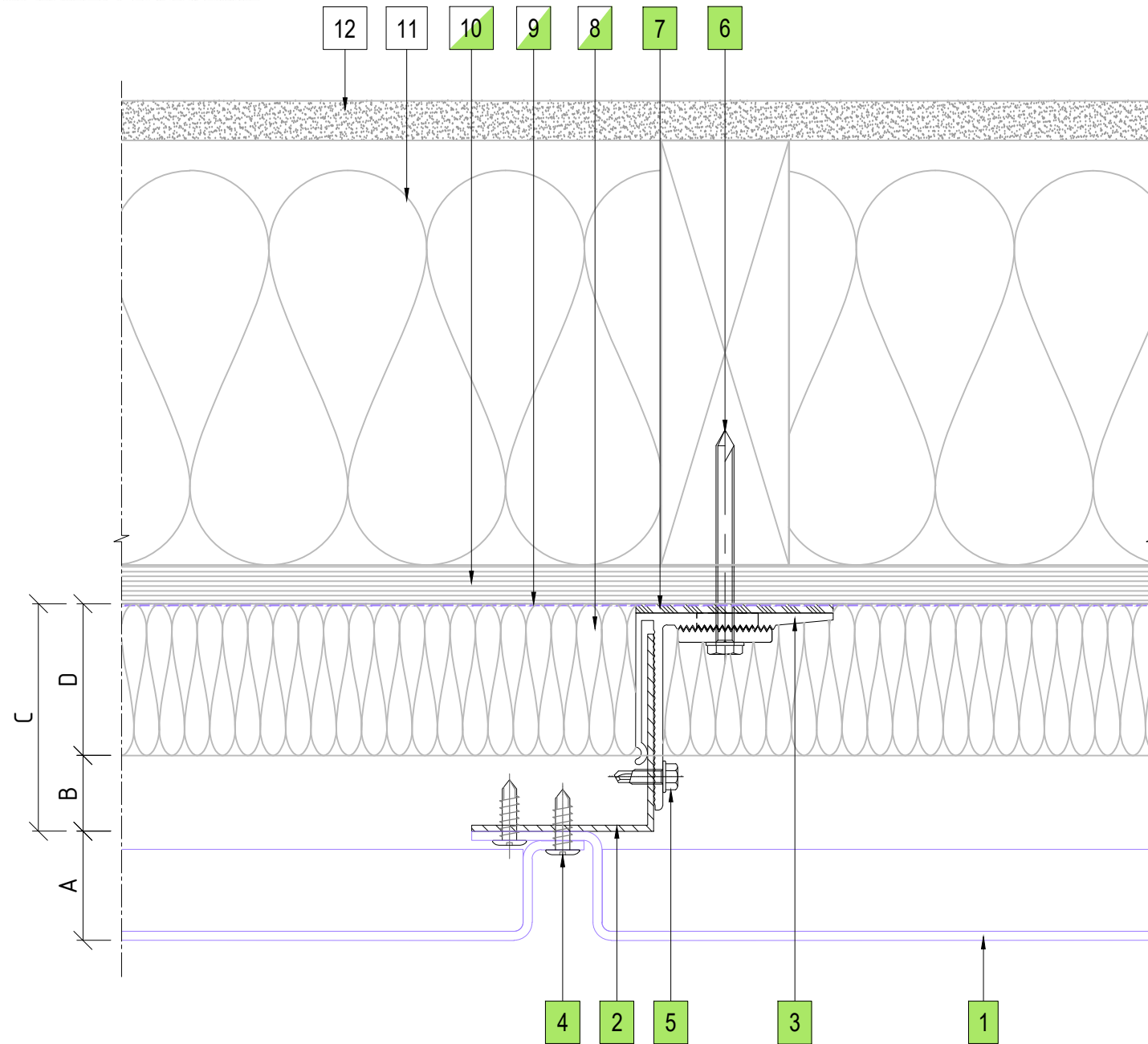
Scale @ A3 : 1:2.5

Rev. : NOV 2022

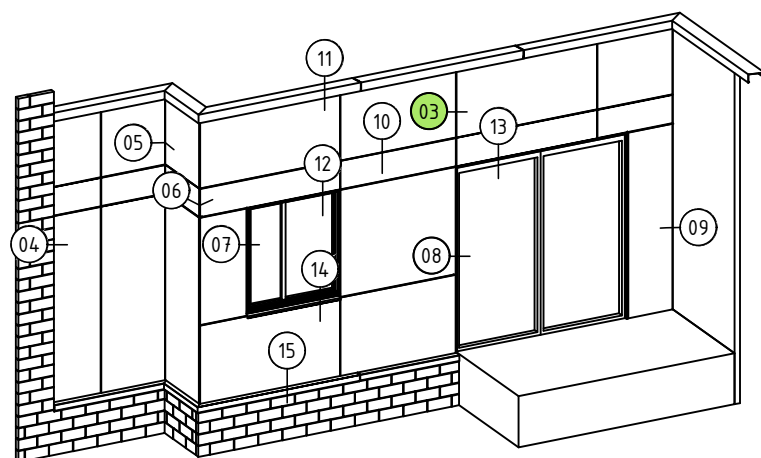
System # :  
SS-EN01-DF1

Detail # :  
02

**ENCLAD™ RAINSCREEN SYSTEMS**



ALTERNATIVE OPTIONS



03 VERTICAL PANEL JOINT DETAIL  
ENCLAD™ SOLID SHEET \*

PART OF THE THERMOSASH GROUP COMPANIES :



**COPYRIGHT :** THESE DESIGNS, DETAILS AND/OR SPECIFICATIONS AND THE COPYRIGHT THEREIN, REMAIN THE PROPERTY OF INSITE FACADES LTD.

**DISCLAIMER :** THESE DETAILS ARE PROVIDED FOR INDICATIVE PURPOSES ONLY. CONSTRUCTION/SYSTEM DETAILS CAN VARY DEPENDING ON PROJECT SPECIFIC SPECIFICATION AND ENGINEERING REQUIREMENTS. THE DESIGNER IS RESPONSIBLE FOR ENSURING DETAILS SATISFY ALL NEW ZEALAND BUILDING CODE CLAUSES. THE DESIGNER IS RESPONSIBLE FOR ENSURING BUILDING WRAPS, FIRESTOPS AND INSULATION/SPECIFICATION COMPLY WITH MANUFACTURERS RECOMMENDATIONS AND NZBC REGULATIONS. REFER TO INSITE WEBSITE FOR FULL TERMS AND CONDITIONS.

**LEGEND**

|    |  |
|----|--|
| A  | ENCLAD™ SOLID SHEET *  |
| B  | 20mm - 25mm NOMINAL VENTILATION ZONE (AIR GAP)   |
| C  | ** 75mm SYSTEM CAVITY TO ACCOMMODATE 50mm THICK INSULATION   |
| D  | ** 50mm INSULATION (OPTION BY INSITE)<br>FIRE STOP (OPTION BY INSITE)  |
| ** | OTHER OPTIONS AVAILABLE (PROJECT SPECIFIC)<br>95mm SYSTEM CAVITY FOR 75mm THICK INSULATION<br>120mm SYSTEM CAVITY FOR 100mm THICK INSULATION |

**PARTS LIST**

|    |  |
|----|--|
| 1  | ENCLAD™ FOLDED ALUMINIUM PANEL                         |
| 2  | ENCLAD EN01 ALUMINIUM SUPPORT PROFILE                  |
| 3  | ENCLAD EN01 ALUMINIUM HELPING HAND BRACKET             |
| 4  | ENCLAD PANEL FIXING (STAINLESS STEEL)                  |
| 5  | ENCLAD BRACKET TO RAIL FIXING (STAINLESS STEEL)        |
| 6  | ENCLAD HOST STRUCTURAL FIXING (STAINLESS STEEL)        |
| 7  | ENCLAD THERMAL ISOLATION PAD                           |
| 8  | CAVITY INSULATION (OPTION BY INSITE)                   |
| 9  | BUILDING WRAP / MEMBRANE (OPTION BY INSITE)            |
| 10 | RIGID AIR BARRIER / SHEATHING BOARD (OPTION BY INSITE) |
| 11 | WALL INSULATION (BY OTHERS)                            |
| 12 | PLASTER BOARD (BY OTHERS)                              |

**\* SOLID SHEET OPTIONS**

|   |                      |
|---|----------------------|
| • | SOLID ALUMINIUM      |
| • | ALUCOLUX®            |
| • | PERFORATED ALUMINIUM |
| • | STAINLESS STEEL      |
| • | COPPER               |
| • | SOLID ZINC           |

Cladding Type :

**ENCLAD™ SOLID SHEET \***

Support System :

**ENCLAD™ EN01 - DISCREET FIXED**

Detail Description :

VERTICAL PANEL JOINT DETAIL (PLAN VIEW)

Scale @ A3 : 1:2

Rev. : NOV 2022

System # :

SS-EN01-DF1

Detail # :

03

**ENCLAD™ RAINSCREEN SYSTEMS**



101 STATION ROAD, PENROSE,  
AUCKLAND 1061  
NEW ZEALAND

P: +64 9 307 1529  
www.insitefacades.co.nz

**LEGEND**

|    |  |
|----|--|
| A  | ENCLAD™ SOLID SHEET *  |
| B  | 20mm - 25mm NOMINAL VENTILATION ZONE (AIR GAP)   |
| C  | ** 75mm SYSTEM CAVITY TO ACCOMMODATE 50mm THICK INSULATION   |
| D  | ** 50mm INSULATION (OPTION BY INSITE)<br>FIRE STOP (OPTION BY INSITE)  |
| ** | OTHER OPTIONS AVAILABLE (PROJECT SPECIFIC)<br>95mm SYSTEM CAVITY FOR 75mm THICK INSULATION<br>120mm SYSTEM CAVITY FOR 100mm THICK INSULATION |

**PARTS LIST**

|    |  |
|----|--|
| 1  | ENCLAD™ FOLDED ALUMINIUM PANEL                         |
| 2  | ENCLAD EN01 ALUMINIUM SUPPORT PROFILE                  |
| 3  | ENCLAD EN01 ALUMINIUM HELPING HAND BRACKET             |
| 4  | ENCLAD PANEL FIXING (STAINLESS STEEL)                  |
| 5  | ENCLAD BRACKET TO RAIL FIXING (STAINLESS STEEL)        |
| 6  | ENCLAD HOST STRUCTURAL FIXING (STAINLESS STEEL)        |
| 7  | ENCLAD THERMAL ISOLATION PAD                           |
| 8  | CAVITY INSULATION (OPTION BY INSITE)                   |
| 9  | BUILDING WRAP / MEMBRANE (OPTION BY INSITE)            |
| 10 | RIGID AIR BARRIER / SHEATHING BOARD (OPTION BY INSITE) |
| 11 | WALL INSULATION (BY OTHERS)                            |
| 12 | PLASTER BOARD (BY OTHERS)                              |

**\* SOLID SHEET OPTIONS**

|   |                      |
|---|----------------------|
| • | SOLID ALUMINIUM      |
| • | ALUCOLUX®            |
| • | PERFORATED ALUMINIUM |
| • | STAINLESS STEEL      |
| • | COPPER               |
| • | SOLID ZINC           |

Cladding Type :

**ENCLAD™ SOLID SHEET \***

Support System :

**ENCLAD™ EN01 - DISCREET FIXED**

Detail Description :

**BRICKWALL ABUTMENT DETAIL (PLAN VIEW)**

Scale @ A3 : 1:2

Rev. : NOV 2022

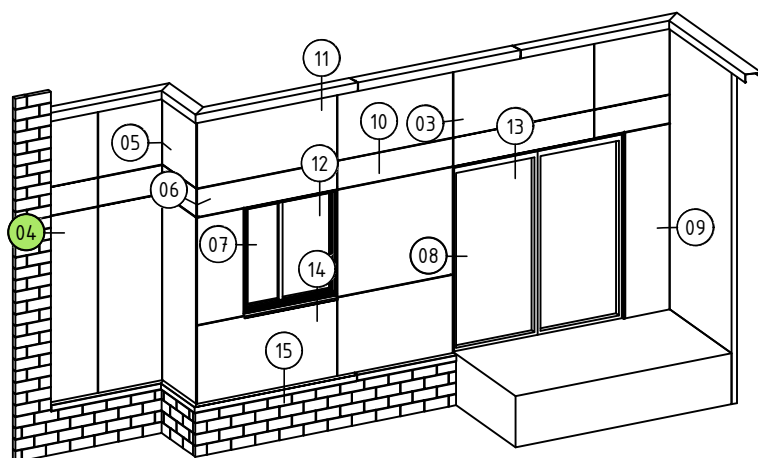
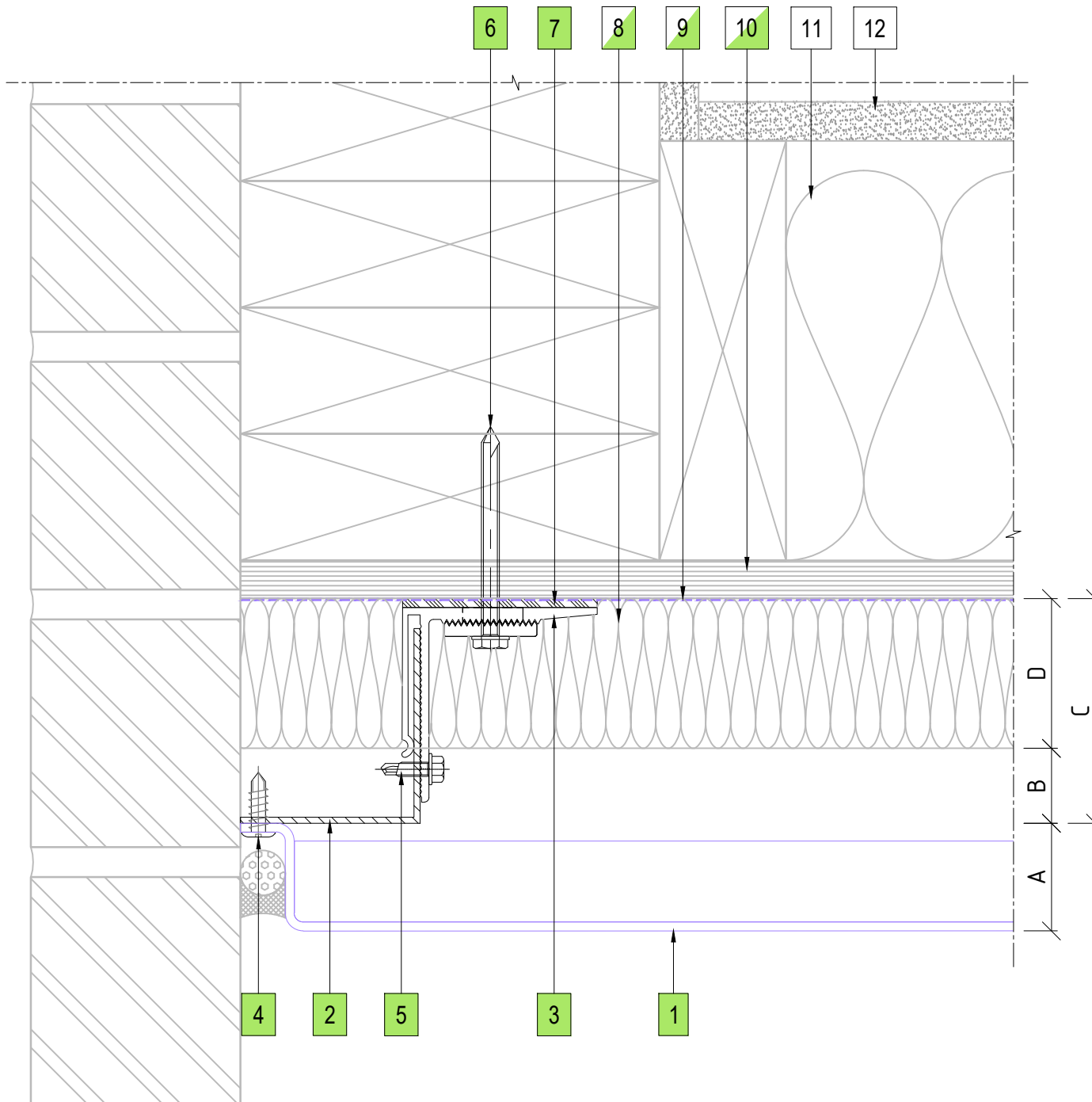
System # :

SS-EN01-DF1

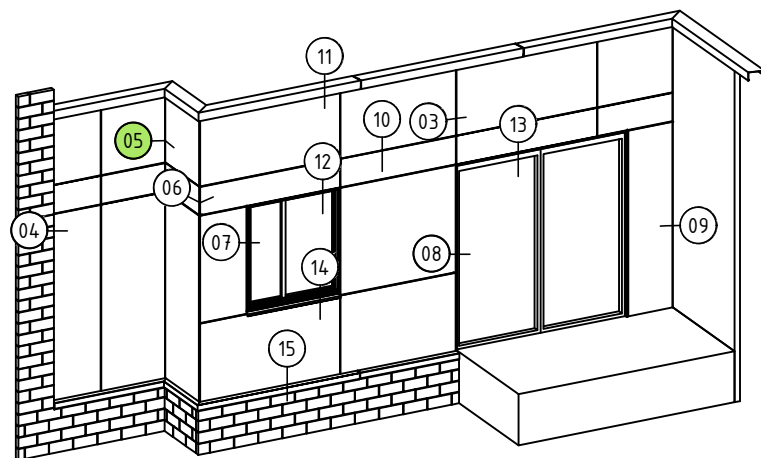
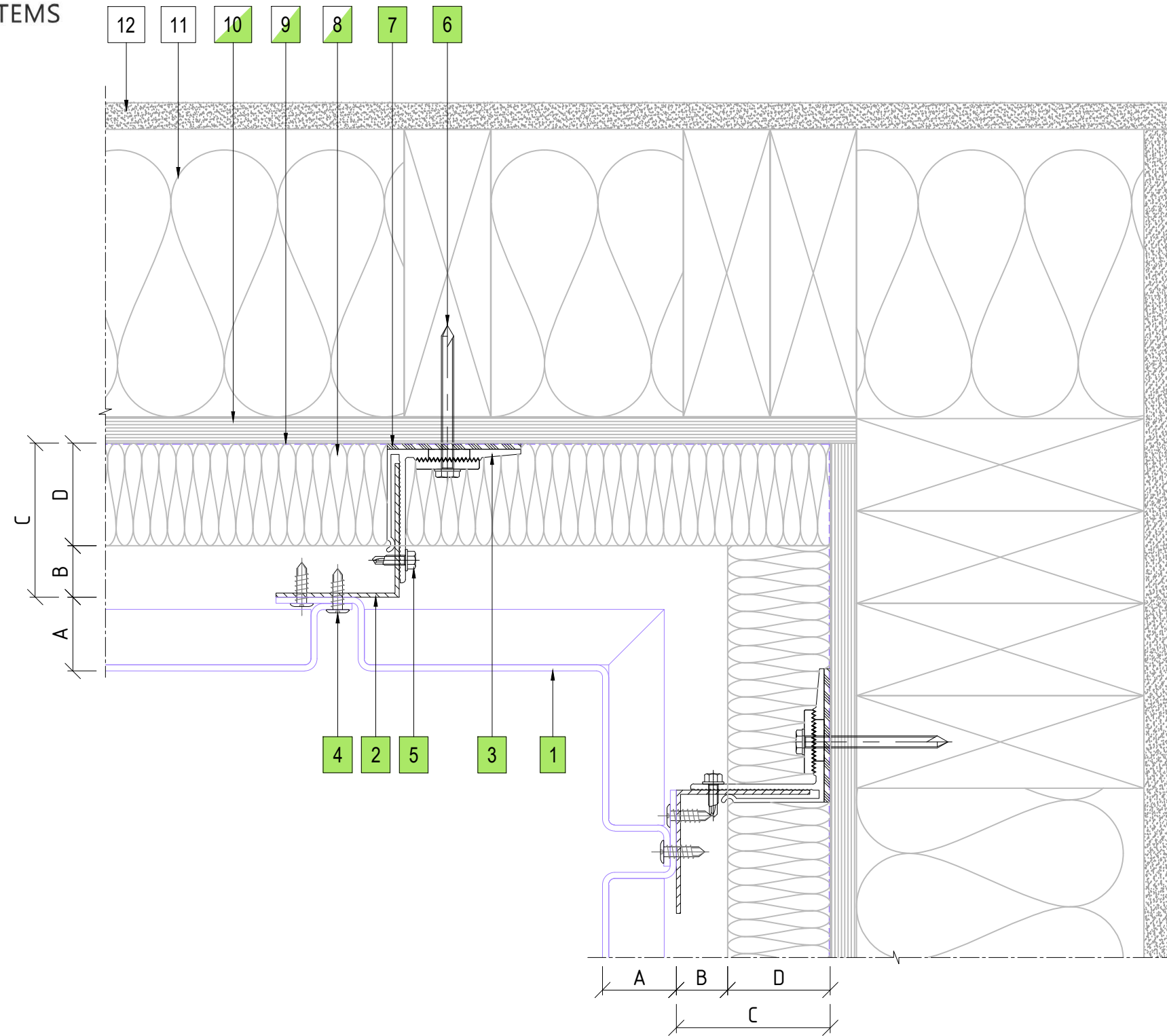
Detail # :

04

**ENCLAD™ RAINSCREEN SYSTEMS**



04 BRICKWALL ABUTMENT DETAIL  
ENCLAD™ SOLID SHEET \*



05 INTERNAL CORNER PANEL DETAIL  
ENCLAD™ SOLID SHEET \*

**LEGEND**

|    |  |
|----|--|
| A  | ENCLAD™ SOLID SHEET *  |
| B  | 20mm - 25mm NOMINAL VENTILATION ZONE (AIR GAP)   |
| C  | ** 75mm SYSTEM CAVITY TO ACCOMMODATE 50mm THICK INSULATION   |
| D  | ** 50mm INSULATION (OPTION BY INSITE)<br>FIRE STOP (OPTION BY INSITE)  |
| ** | OTHER OPTIONS AVAILABLE (PROJECT SPECIFIC)<br>95mm SYSTEM CAVITY FOR 75mm THICK INSULATION<br>120mm SYSTEM CAVITY FOR 100mm THICK INSULATION |

**PARTS LIST**

|    |  |
|----|--|
| 1  | ENCLAD™ FOLDED ALUMINIUM PANEL                         |
| 2  | ENCLAD EN01 ALUMINIUM SUPPORT PROFILE                  |
| 3  | ENCLAD EN01 ALUMINIUM HELPING HAND BRACKET             |
| 4  | ENCLAD PANEL FIXING (STAINLESS STEEL)                  |
| 5  | ENCLAD BRACKET TO RAIL FIXING (STAINLESS STEEL)        |
| 6  | ENCLAD HOST STRUCTURAL FIXING (STAINLESS STEEL)        |
| 7  | ENCLAD THERMAL ISOLATION PAD                           |
| 8  | CAVITY INSULATION (OPTION BY INSITE)                   |
| 9  | BUILDING WRAP / MEMBRANE (OPTION BY INSITE)            |
| 10 | RIGID AIR BARRIER / SHEATHING BOARD (OPTION BY INSITE) |
| 11 | WALL INSULATION (BY OTHERS)                            |
| 12 | PLASTER BOARD (BY OTHERS)                              |

**\* SOLID SHEET OPTIONS**

|   |                      |
|---|----------------------|
| • | SOLID ALUMINIUM      |
| • | ALUCOLUX®            |
| • | PERFORATED ALUMINIUM |
| • | STAINLESS STEEL      |
| • | COPPER               |
| • | SOLID ZINC           |

Cladding Type :

**ENCLAD™ SOLID SHEET \***

Support System :

**ENCLAD™ EN01 - DISCREET FIXED**

Detail Description :

INTERNAL CORNER PANEL DETAIL (PLAN VIEW)

Scale @ A3 : 1:2.5

Rev. : NOV 2022

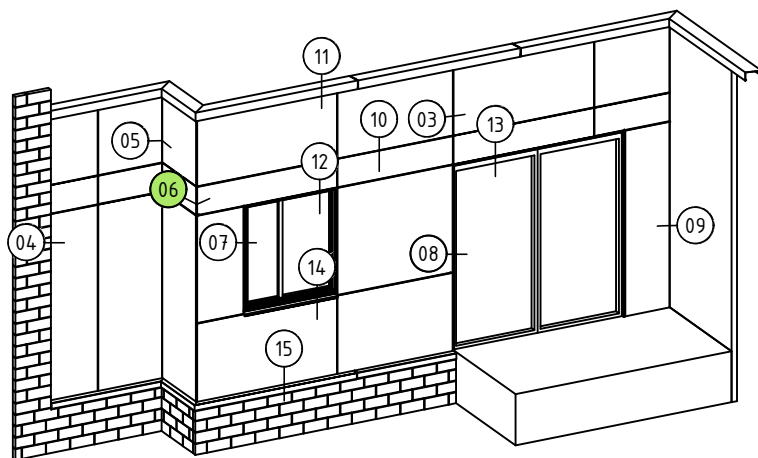
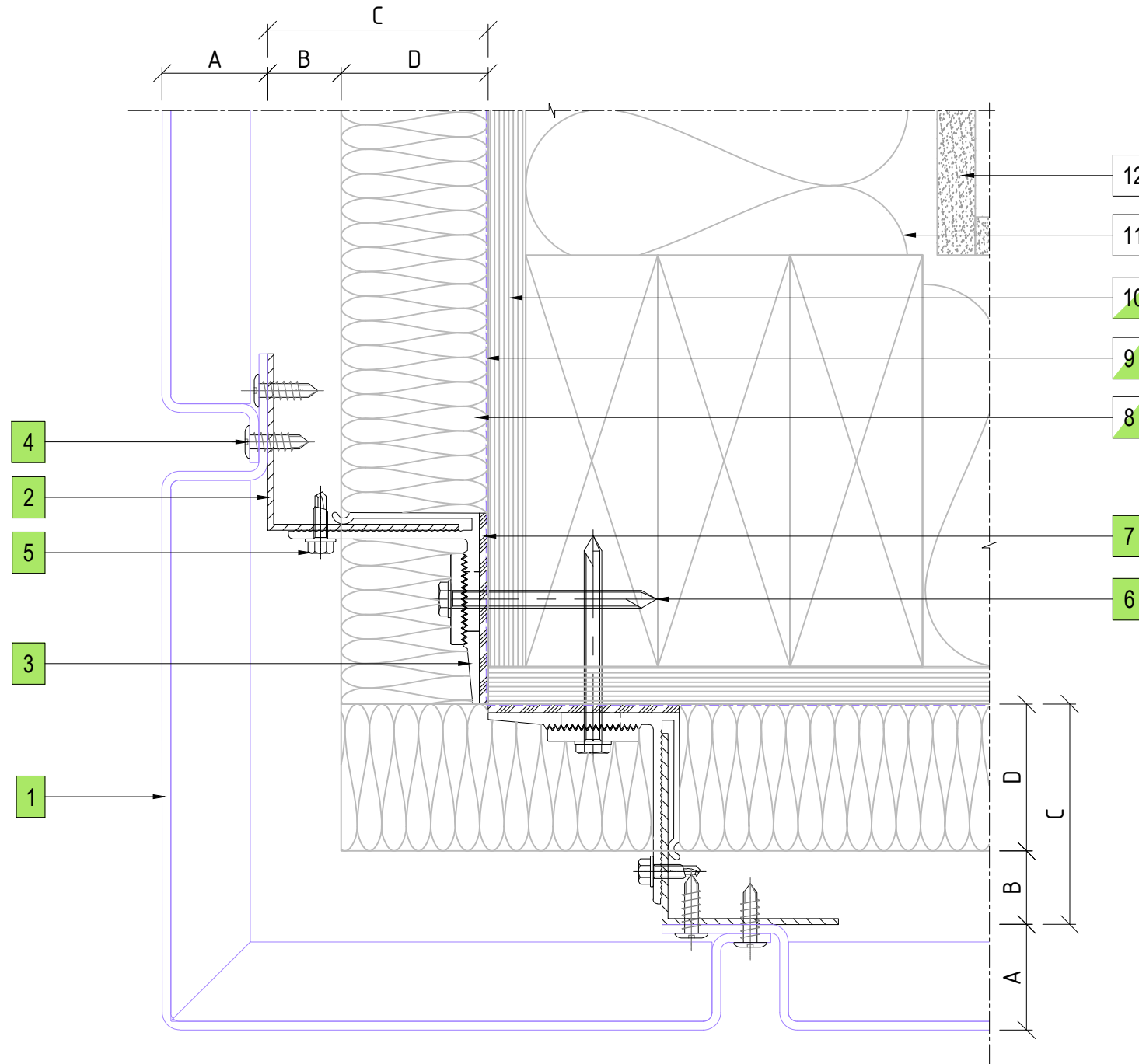
System # :

SS-EN01-DF1

Detail # :

05

**ENCLAD™ RAINSCREEN SYSTEMS**



06 EXTERNAL CORNER PANEL DETAIL  
ENCLAD™ SOLID SHEET \*

**LEGEND**

|    |  |
|----|--|
| A  | ENCLAD™ SOLID SHEET *  |
| B  | 20mm - 25mm NOMINAL VENTILATION ZONE (AIR GAP)   |
| C  | ** 75mm SYSTEM CAVITY TO ACCOMMODATE 50mm THICK INSULATION   |
| D  | ** 50mm INSULATION (OPTION BY INSITE)<br>FIRE STOP (OPTION BY INSITE)  |
| ** | OTHER OPTIONS AVAILABLE (PROJECT SPECIFIC)<br>95mm SYSTEM CAVITY FOR 75mm THICK INSULATION<br>120mm SYSTEM CAVITY FOR 100mm THICK INSULATION |

**PARTS LIST**

|    |  |
|----|--|
| 1  | ENCLAD™ FOLDED ALUMINIUM PANEL                         |
| 2  | ENCLAD EN01 ALUMINIUM SUPPORT PROFILE                  |
| 3  | ENCLAD EN01 ALUMINIUM HELPING HAND BRACKET             |
| 4  | ENCLAD PANEL FIXING (STAINLESS STEEL)                  |
| 5  | ENCLAD BRACKET TO RAIL FIXING (STAINLESS STEEL)        |
| 6  | ENCLAD HOST STRUCTURAL FIXING (STAINLESS STEEL)        |
| 7  | ENCLAD THERMAL ISOLATION PAD                           |
| 8  | CAVITY INSULATION (OPTION BY INSITE)                   |
| 9  | BUILDING WRAP / MEMBRANE (OPTION BY INSITE)            |
| 10 | RIGID AIR BARRIER / SHEATHING BOARD (OPTION BY INSITE) |
| 11 | WALL INSULATION (BY OTHERS)                            |
| 12 | PLASTER BOARD (BY OTHERS)                              |

**\* SOLID SHEET OPTIONS**

|   |                      |
|---|----------------------|
| • | SOLID ALUMINIUM      |
| • | ALUCOLUX®            |
| • | PERFORATED ALUMINIUM |
| • | STAINLESS STEEL      |
| • | COPPER               |
| • | SOLID ZINC           |

Cladding Type :

**ENCLAD™ SOLID SHEET \***

Support System :

**ENCLAD™ EN01 - DISCREET FIXED**

Detail Description :

EXTERNAL CORNER PANEL DETAIL (PLAN VIEW)

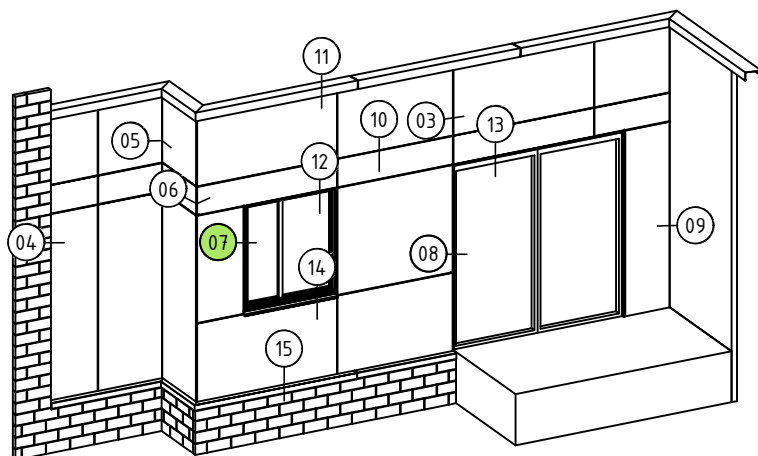
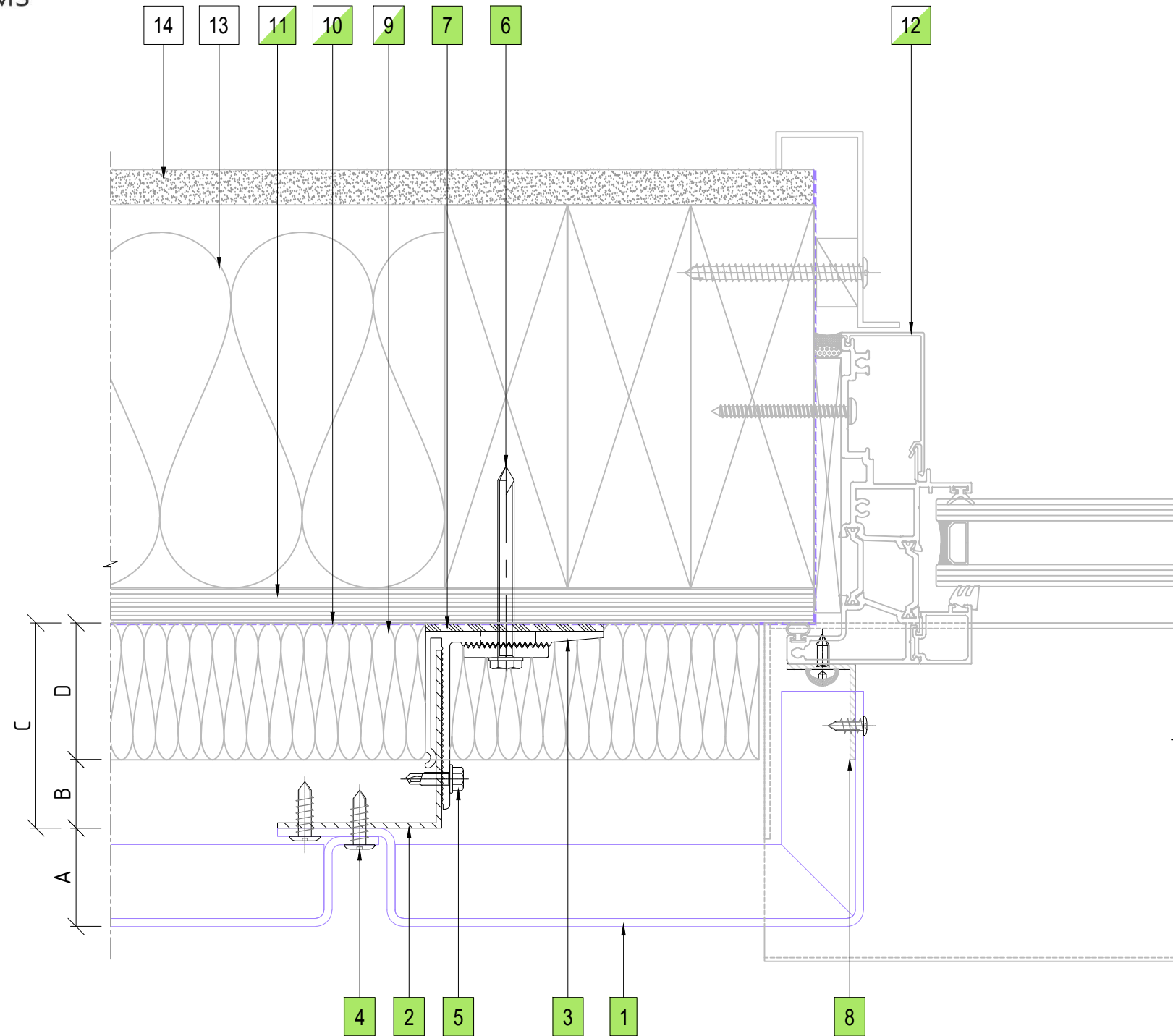
Scale @ A3 : 1:2

Rev. : NOV 2022

System # :  
SS-EN01-DF1

Detail # :  
06

**ENCLAD™ RAINSCREEN SYSTEMS**



07 WINDOW JAMB DETAIL  
ENCLAD™ SOLID SHEET \*

PART OF THE THERMOSASH GROUP COMPANIES :



**COPYRIGHT :** THESE DESIGNS, DETAILS AND/OR SPECIFICATIONS AND THE COPYRIGHT THEREIN, REMAIN THE PROPERTY OF INSITE FACADES LTD.

**DISCLAIMER :** THESE DETAILS ARE PROVIDED FOR INDICATIVE PURPOSES ONLY. CONSTRUCTION/SYSTEM DETAILS CAN VARY DEPENDING ON PROJECT SPECIFIC SPECIFICATION AND ENGINEERING REQUIREMENTS. THE DESIGNER IS RESPONSIBLE FOR ENSURING DETAILS SATISFY ALL NEW ZEALAND BUILDING CODE CLAUSES. THE DESIGNER IS RESPONSIBLE FOR ENSURING BUILDING WRAPS, FIRESTOPS AND INSULATION/SPECIFICATION COMPLY WITH MANUFACTURERS RECOMMENDATIONS AND NZBC REGULATIONS. REFER TO INSITE WEBSITE FOR FULL TERMS AND CONDITIONS.

**LEGEND**

|    |  |
|----|--|
| A  | ENCLAD™ SOLID SHEET *  |
| B  | 20mm - 25mm NOMINAL VENTILATION ZONE (AIR GAP)   |
| C  | ** 75mm SYSTEM CAVITY TO ACCOMMODATE 50mm THICK INSULATION   |
| D  | ** 50mm INSULATION (OPTION BY INSITE)<br>FIRE STOP (OPTION BY INSITE)  |
| ** | OTHER OPTIONS AVAILABLE (PROJECT SPECIFIC)<br>95mm SYSTEM CAVITY FOR 75mm THICK INSULATION<br>120mm SYSTEM CAVITY FOR 100mm THICK INSULATION |

**PARTS LIST**

|    |  |
|----|--|
| 1  | ENCLAD™ FOLDED ALUMINIUM PANEL                         |
| 2  | ENCLAD EN01 ALUMINIUM SUPPORT PROFILE                  |
| 3  | ENCLAD EN01 ALUMINIUM HELPING HAND BRACKET             |
| 4  | ENCLAD PANEL FIXING (STAINLESS STEEL)                  |
| 5  | ENCLAD BRACKET TO RAIL FIXING (STAINLESS STEEL)        |
| 6  | ENCLAD HOST STRUCTURAL FIXING (STAINLESS STEEL)        |
| 7  | ENCLAD THERMAL ISOLATION PAD                           |
| 8  | ENCLAD ALUMINIUM CLOSURE                               |
| 9  | CAVITY INSULATION (OPTION BY INSITE)                   |
| 10 | BUILDING WRAP / MEMBRANE (OPTION BY INSITE)            |
| 11 | RIGID AIR BARRIER / SHEATHING BOARD (OPTION BY INSITE) |
| 12 | ALUMINIUM DOORS, WINDOWS & REVEALS (OPTION BY INSITE)  |
| 13 | WALL INSULATION (BY OTHERS)                            |
| 14 | PLASTER BOARD (BY OTHERS)                              |

**\* SOLID SHEET OPTIONS**

|   |                      |
|---|----------------------|
| • | SOLID ALUMINIUM      |
| • | ALUCOLUX®            |
| • | PERFORATED ALUMINIUM |
| • | STAINLESS STEEL      |
| • | COPPER               |
| • | SOLID ZINC           |

Cladding Type :

**ENCLAD™ SOLID SHEET \***

Support System :

**ENCLAD™ EN01 - DISCREET FIXED**

Detail Description :

WINDOW JAMB DETAIL (PLAN VIEW)

Scale @ A3 : 1:2

Rev. : NOV 2022

System # :

SS-EN01-DF1

Detail # :

07

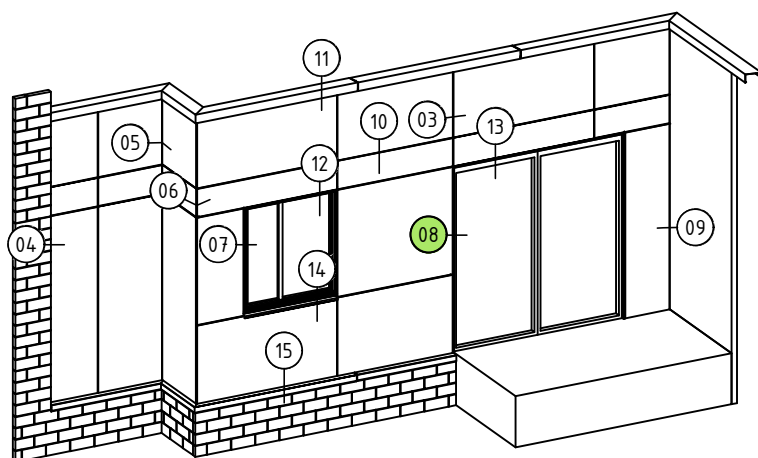
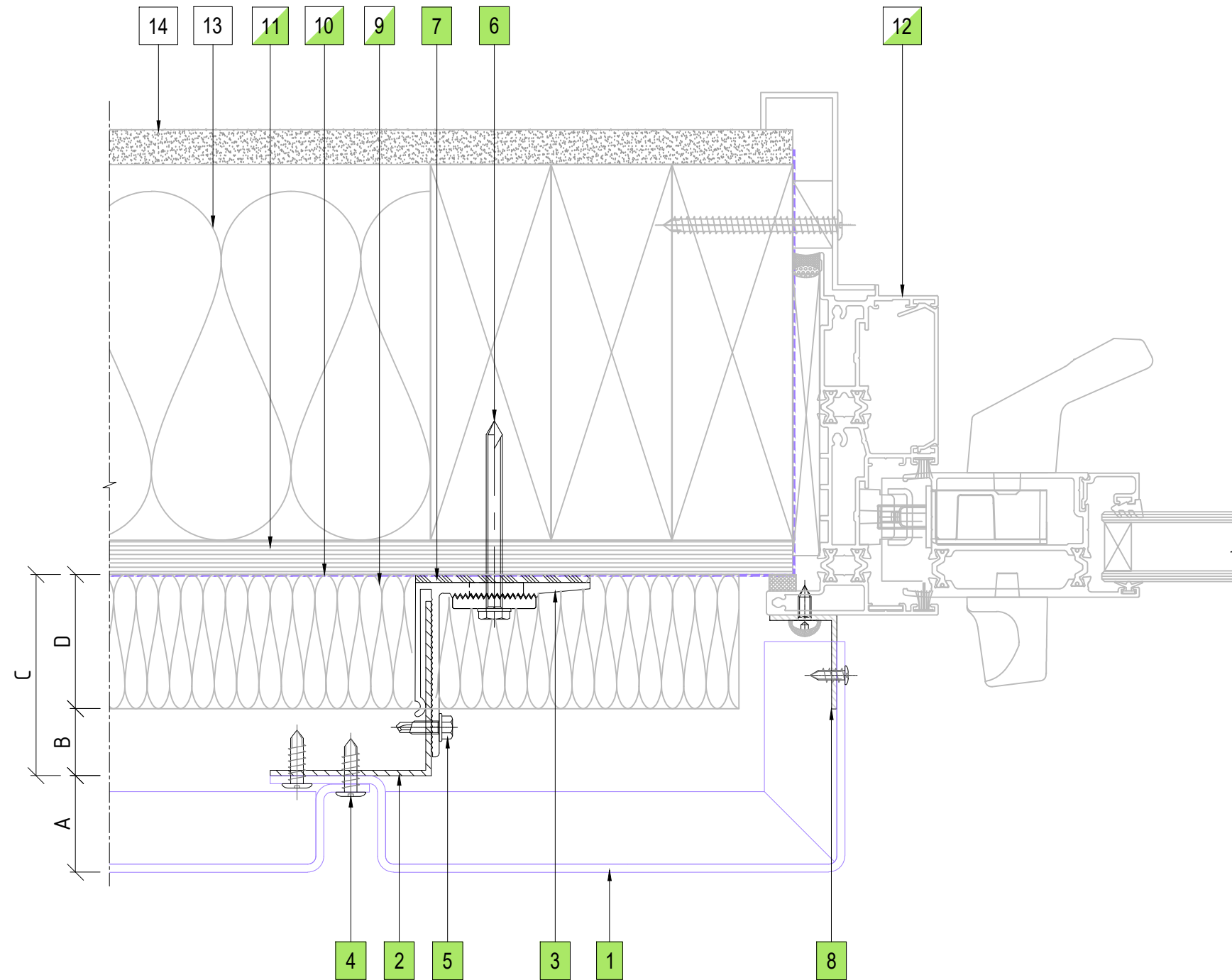
**ENCLAD™ RAINSCREEN SYSTEMS**



101 STATION ROAD, PENROSE,  
AUCKLAND 1061  
NEW ZEALAND

P: +64 9 307 1529  
www.insitefacades.co.nz





08 DOOR JAMB DETAIL  
ENCLAD™ SOLID SHEET \*

**LEGEND**

|    |  |
|----|--|
| A  | ENCLAD™ SOLID SHEET *  |
| B  | 20mm - 25mm NOMINAL VENTILATION ZONE (AIR GAP)   |
| C  | ** 75mm SYSTEM CAVITY TO ACCOMMODATE 50mm THICK INSULATION   |
| D  | ** 50mm INSULATION (OPTION BY INSITE)<br>FIRE STOP (OPTION BY INSITE)  |
| ** | OTHER OPTIONS AVAILABLE (PROJECT SPECIFIC)<br>95mm SYSTEM CAVITY FOR 75mm THICK INSULATION<br>120mm SYSTEM CAVITY FOR 100mm THICK INSULATION |

**PARTS LIST**

|    |  |
|----|--|
| 1  | ENCLAD™ FOLDED ALUMINIUM PANEL                         |
| 2  | ENCLAD EN01 ALUMINIUM SUPPORT PROFILE                  |
| 3  | ENCLAD EN01 ALUMINIUM HELPING HAND BRACKET             |
| 4  | ENCLAD PANEL FIXING (STAINLESS STEEL)                  |
| 5  | ENCLAD BRACKET TO RAIL FIXING (STAINLESS STEEL)        |
| 6  | ENCLAD HOST STRUCTURAL FIXING (STAINLESS STEEL)        |
| 7  | ENCLAD THERMAL ISOLATION PAD                           |
| 8  | ENCLAD ALUMINIUM CLOSURE                               |
| 9  | CAVITY INSULATION (OPTION BY INSITE)                   |
| 10 | BUILDING WRAP / MEMBRANE (OPTION BY INSITE)            |
| 11 | RIGID AIR BARRIER / SHEATHING BOARD (OPTION BY INSITE) |
| 12 | ALUMINIUM DOORS, WINDOWS & REVEALS (OPTION BY INSITE)  |
| 13 | WALL INSULATION (BY OTHERS)                            |
| 14 | PLASTER BOARD (BY OTHERS)                              |

**\* SOLID SHEET OPTIONS**

|   |                      |
|---|----------------------|
| • | SOLID ALUMINIUM      |
| • | ALUCOLUX®            |
| • | PERFORATED ALUMINIUM |
| • | STAINLESS STEEL      |
| • | COPPER               |
| • | SOLID ZINC           |

Cladding Type :

**ENCLAD™ SOLID SHEET \***

Support System :

**ENCLAD™ EN01 - DISCREET FIXED**

Detail Description :

**DOOR JAMB DETAIL (PLAN VIEW)**

Scale @ A3 : 1:2

Rev. : NOV 2022

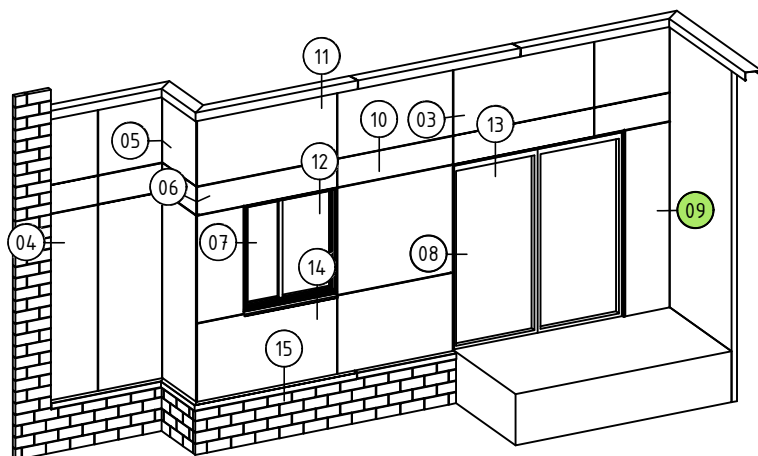
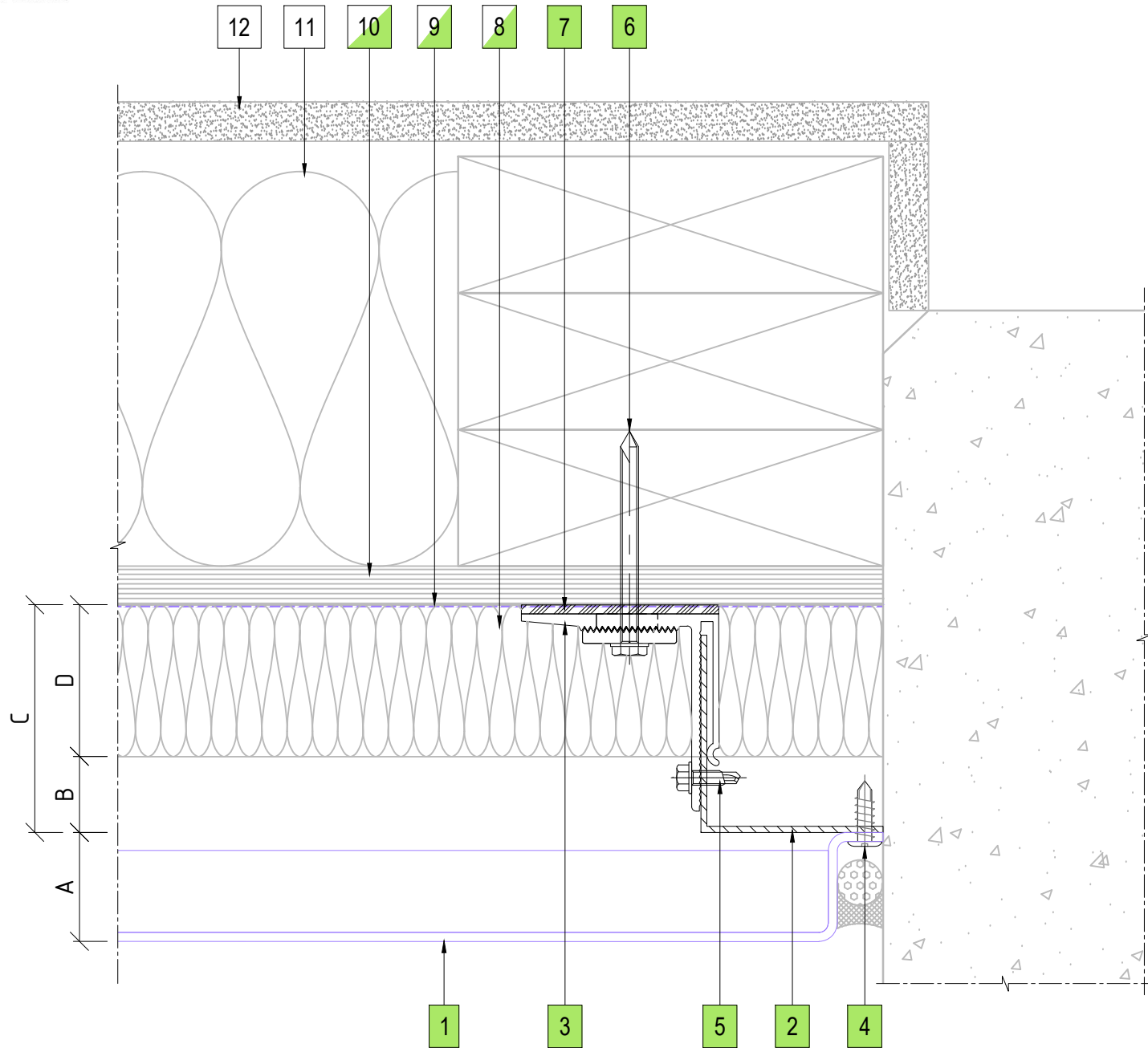
System # :

**SS-EN01-DF1**

Detail # :

**08**

**ENCLAD™ RAINSCREEN SYSTEMS**



09 CONCRETE WALL ABUTMENT DETAIL  
ENCLAD™ SOLID SHEET \*

**LEGEND**

|    |  |
|----|--|
| A  | ENCLAD™ SOLID SHEET *  |
| B  | 20mm - 25mm NOMINAL VENTILATION ZONE (AIR GAP)   |
| C  | ** 75mm SYSTEM CAVITY TO ACCOMMODATE 50mm THICK INSULATION   |
| D  | ** 50mm INSULATION (OPTION BY INSITE)<br>FIRE STOP (OPTION BY INSITE)  |
| ** | OTHER OPTIONS AVAILABLE (PROJECT SPECIFIC)<br>95mm SYSTEM CAVITY FOR 75mm THICK INSULATION<br>120mm SYSTEM CAVITY FOR 100mm THICK INSULATION |

**PARTS LIST**

|    |  |
|----|--|
| 1  | ENCLAD™ FOLDED ALUMINIUM PANEL                         |
| 2  | ENCLAD EN01 ALUMINIUM SUPPORT PROFILE                  |
| 3  | ENCLAD EN01 ALUMINIUM HELPING HAND BRACKET             |
| 4  | ENCLAD PANEL FIXING (STAINLESS STEEL)                  |
| 5  | ENCLAD BRACKET TO RAIL FIXING (STAINLESS STEEL)        |
| 6  | ENCLAD HOST STRUCTURAL FIXING (STAINLESS STEEL)        |
| 7  | ENCLAD THERMAL ISOLATION PAD                           |
| 8  | CAVITY INSULATION (OPTION BY INSITE)                   |
| 9  | BUILDING WRAP / MEMBRANE (OPTION BY INSITE)            |
| 10 | RIGID AIR BARRIER / SHEATHING BOARD (OPTION BY INSITE) |
| 11 | WALL INSULATION (BY OTHERS)                            |
| 12 | PLASTER BOARD (BY OTHERS)                              |

**\* SOLID SHEET OPTIONS**

|   |                      |
|---|----------------------|
| • | SOLID ALUMINIUM      |
| • | ALUCOLUX®            |
| • | PERFORATED ALUMINIUM |
| • | STAINLESS STEEL      |
| • | COPPER               |
| • | SOLID ZINC           |

Cladding Type :

**ENCLAD™ SOLID SHEET \***

Support System :

**ENCLAD™ EN01 - DISCREET FIXED**

Detail Description :

**CONCRETE WALL ABUTMENT DETAIL (PLAN VIEW)**

Scale @ A3 : 1:2

Rev. : NOV 2022

System # :

**SS-EN01-DF1**

Detail # :

**09**

**ENCLAD™ RAINSCREEN SYSTEMS**

**LEGEND**

|    |  |
|----|--|
| A  | ENCLAD™ SOLID SHEET *  |
| B  | 20mm - 25mm NOMINAL VENTILATION ZONE (AIR GAP)   |
| C  | ** 75mm SYSTEM CAVITY TO ACCOMMODATE 50mm THICK INSULATION   |
| D  | ** 50mm INSULATION (OPTION BY INSITE)<br>FIRE STOP (OPTION BY INSITE)  |
| ** | OTHER OPTIONS AVAILABLE (PROJECT SPECIFIC)<br>95mm SYSTEM CAVITY FOR 75mm THICK INSULATION<br>120mm SYSTEM CAVITY FOR 100mm THICK INSULATION |

**PARTS LIST**

|    |  |
|----|--|
| 1  | ENCLAD™ FOLDED ALUMINIUM PANEL                         |
| 2  | ENCLAD EN01 ALUMINIUM SUPPORT PROFILE                  |
| 3  | ENCLAD EN01 ALUMINIUM HELPING HAND BRACKET             |
| 4  | ENCLAD PANEL FIXING (STAINLESS STEEL)                  |
| 5  | ENCLAD BRACKET TO RAIL FIXING (STAINLESS STEEL)        |
| 6  | ENCLAD HOST STRUCTURAL FIXING (STAINLESS STEEL)        |
| 7  | ENCLAD THERMAL ISOLATION PAD                           |
| 8  | CAVITY INSULATION (OPTION BY INSITE)                   |
| 9  | BUILDING WRAP / MEMBRANE (OPTION BY INSITE)            |
| 10 | RIGID AIR BARRIER / SHEATHING BOARD (OPTION BY INSITE) |
| 11 | WALL INSULATION (BY OTHERS)                            |
| 12 | PLASTER BOARD (BY OTHERS)                              |

**\* SOLID SHEET OPTIONS**

|   |                      |
|---|----------------------|
| • | SOLID ALUMINIUM      |
| • | ALUCOLUX®            |
| • | PERFORATED ALUMINIUM |
| • | STAINLESS STEEL      |
| • | COPPER               |
| • | SOLID ZINC           |

Cladding Type :

**ENCLAD™ SOLID SHEET \***

Support System :

**ENCLAD™ EN01 - DISCREET FIXED**

Detail Description :

**HORIZONTAL PANEL JOINT DETAIL (SECTION VIEW)**

Scale @ A3 : 1:2

Rev. : NOV 2022

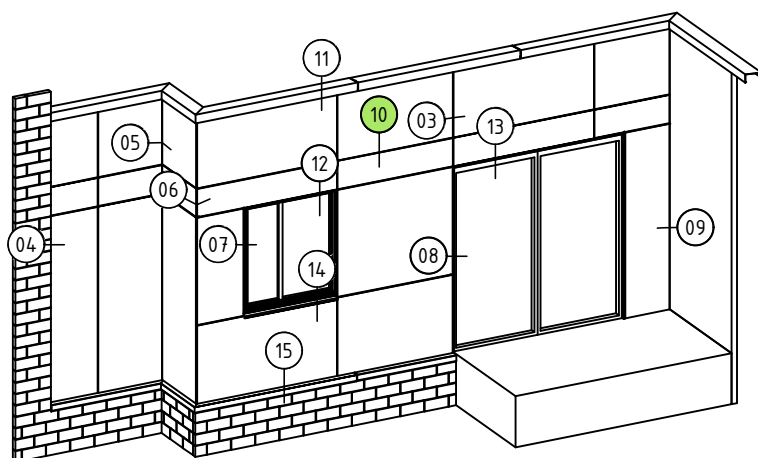
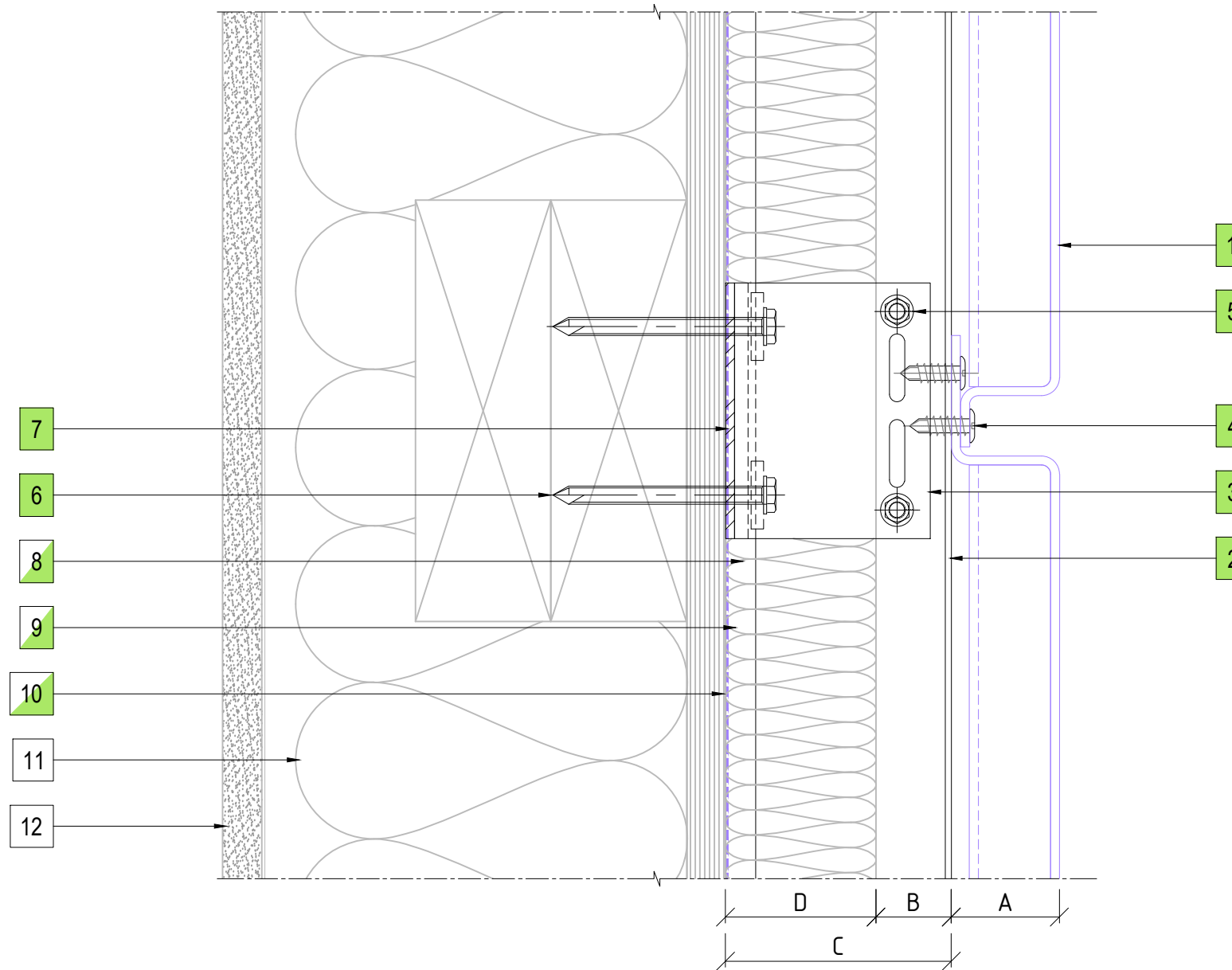
System # :

**SS-EN01-DF1**

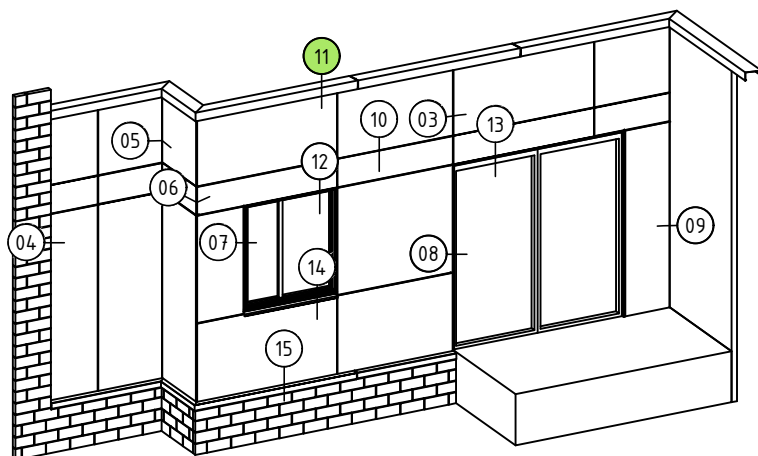
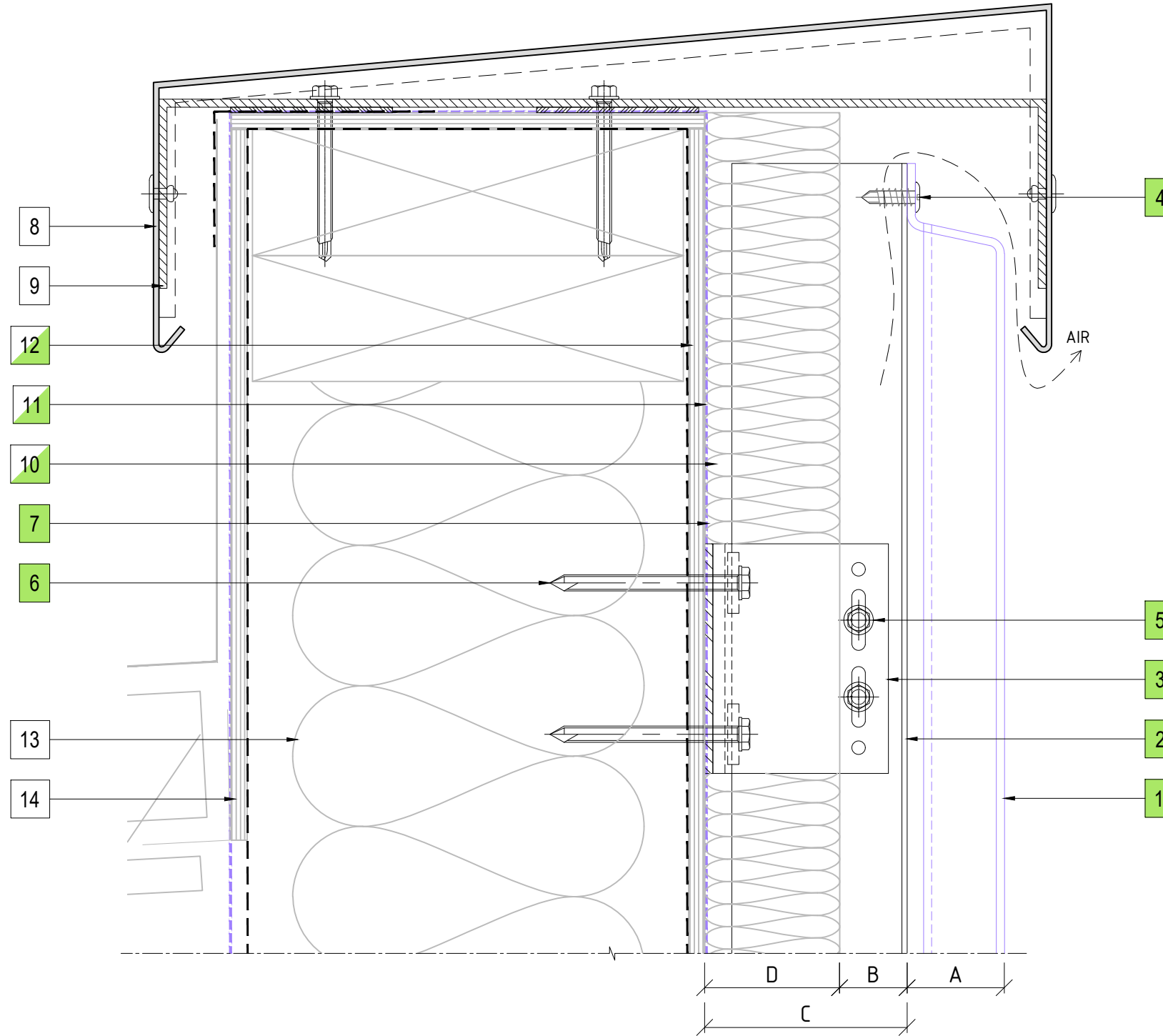
Detail # :

**10**

**ENCLAD™ RAINSCREEN SYSTEMS**



**10** HORIZONTAL PANEL JOINT DETAIL  
ENCLAD™ SOLID SHEET \*



11 PARAPET FLASHING DETAIL  
ENCLAD™ SOLID SHEET \*

**LEGEND**

|    |  |
|----|--|
| A  | ENCLAD™ SOLID SHEET *  |
| B  | 20mm - 25mm NOMINAL VENTILATION ZONE (AIR GAP)   |
| C  | ** 75mm SYSTEM CAVITY TO ACCOMMODATE 50mm THICK INSULATION   |
| D  | ** 50mm INSULATION (OPTION BY INSITE)<br>FIRE STOP (OPTION BY INSITE)  |
| ** | OTHER OPTIONS AVAILABLE (PROJECT SPECIFIC)<br>95mm SYSTEM CAVITY FOR 75mm THICK INSULATION<br>120mm SYSTEM CAVITY FOR 100mm THICK INSULATION |

**PARTS LIST**

|    |  |
|----|--|
| 1  | ENCLAD™ FOLDED ALUMINIUM PANEL                         |
| 2  | ENCLAD EN01 ALUMINIUM SUPPORT PROFILE                  |
| 3  | ENCLAD EN01 ALUMINIUM HELPING HAND BRACKET             |
| 4  | ENCLAD PANEL FIXING (STAINLESS STEEL)                  |
| 5  | ENCLAD BRACKET TO RAIL FIXING (STAINLESS STEEL)        |
| 6  | ENCLAD HOST STRUCTURAL FIXING (STAINLESS STEEL)        |
| 7  | ENCLAD THERMAL ISOLATION PAD                           |
| 8  | ENCLAD ALUMINIUM FLASHING                              |
| 9  | ENCLAD ALUMINIUM BRACKET                               |
| 10 | CAVITY INSULATION (OPTION BY INSITE)                   |
| 11 | BUILDING WRAP / MEMBRANE (OPTION BY INSITE)            |
| 12 | RIGID AIR BARRIER / SHEATHING BOARD (OPTION BY INSITE) |
| 13 | WALL INSULATION (BY OTHERS)                            |
| 14 | PLASTER BOARD (BY OTHERS)                              |

**\* SOLID SHEET OPTIONS**

|   |                      |
|---|----------------------|
| • | SOLID ALUMINIUM      |
| • | ALUCOLUX®            |
| • | PERFORATED ALUMINIUM |
| • | STAINLESS STEEL      |
| • | COPPER               |
| • | SOLID ZINC           |

Cladding Type :

**ENCLAD™ SOLID SHEET \***

Support System :

**ENCLAD™ EN01 - DISCREET FIXED**

Detail Description :

**PARAPET FLASHING DETAIL (SECTION VIEW)**

Scale @ A3 : 1:2

Rev. : NOV 2022

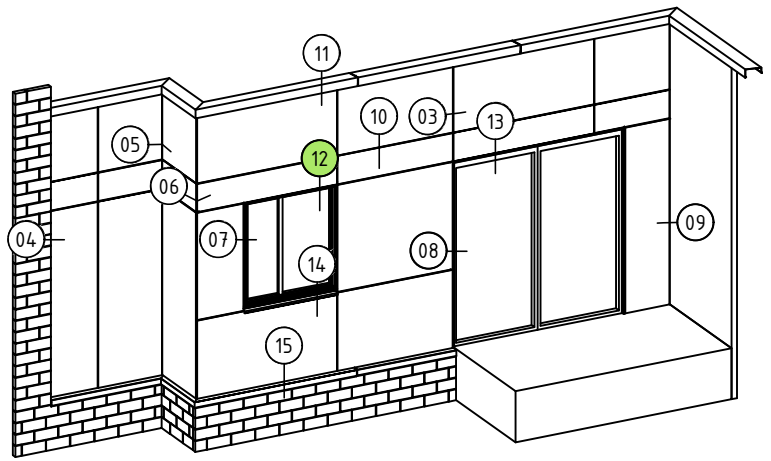
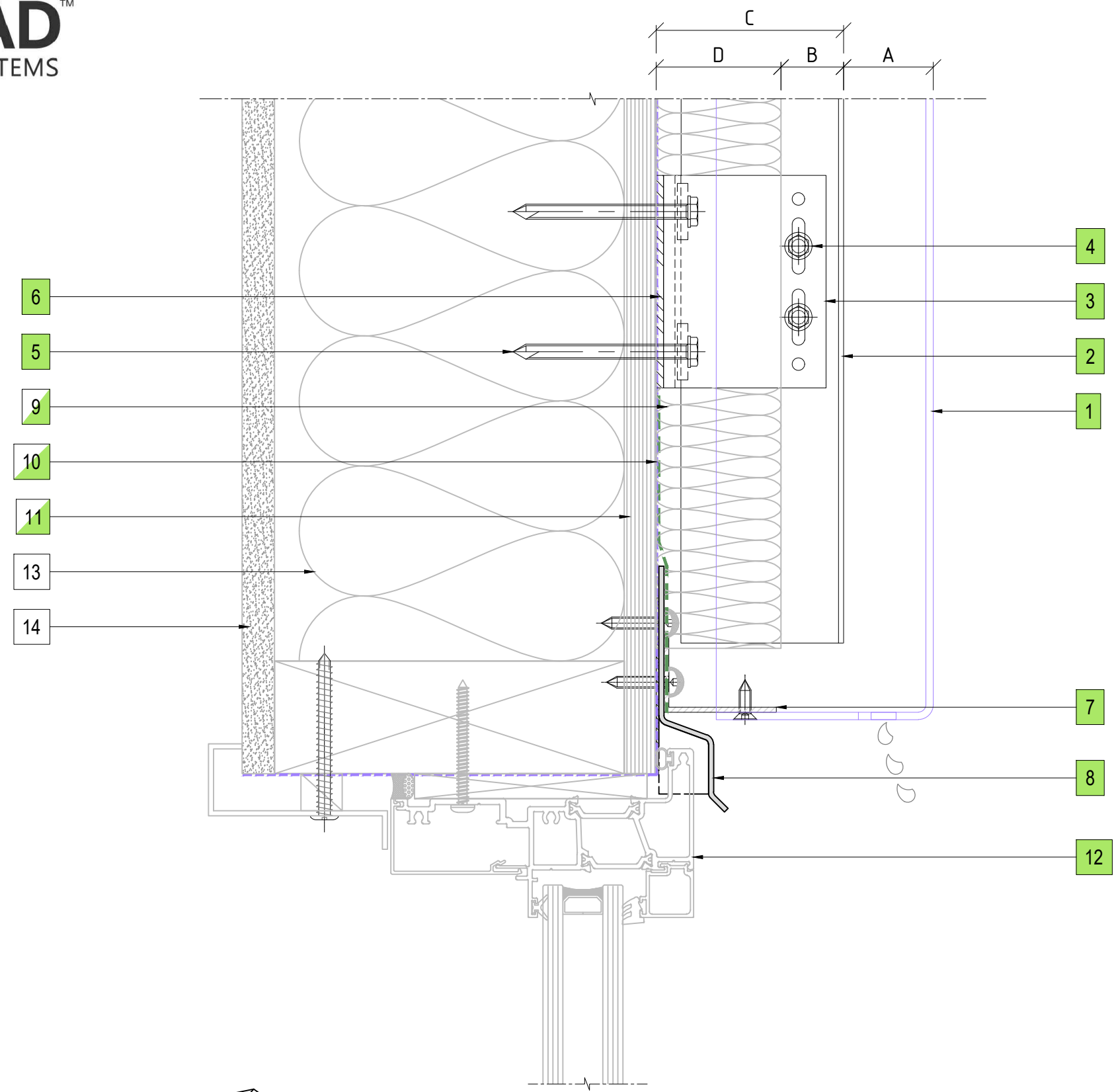
System # :

**SS-EN01-DF1**

Detail # :

**11**

**ENCLAD™ RAINSCREEN SYSTEMS**



12 WINDOW HEAD DETAIL  
ENCLAD™ SOLID SHEET \*

PART OF THE THERMOSASH GROUP COMPANIES :



**COPYRIGHT :** THESE DESIGNS, DETAILS AND/OR SPECIFICATIONS AND THE COPYRIGHT THEREIN, REMAIN THE PROPERTY OF INSITE FACADES LTD.

**DISCLAIMER :** THESE DETAILS ARE PROVIDED FOR INDICATIVE PURPOSES ONLY. CONSTRUCTION/SYSTEM DETAILS CAN VARY DEPENDING ON PROJECT SPECIFIC SPECIFICATION AND ENGINEERING REQUIREMENTS. THE DESIGNER IS RESPONSIBLE FOR ENSURING DETAILS SATISFY ALL NEW ZEALAND BUILDING CODE CLAUSES. THE DESIGNER IS RESPONSIBLE FOR ENSURING BUILDING WRAPS, FIRESTOPS AND INSULATION/SPECIFICATION COMPLY WITH MANUFACTURERS RECOMMENDATIONS AND NZBC REGULATIONS. REFER TO INSITE WEBSITE FOR FULL TERMS AND CONDITIONS.

| LEGEND |  |
|--------|--|
| A      | ENCLAD™ SOLID SHEET *  |
| B      | 20mm - 25mm NOMINAL VENTILATION ZONE (AIR GAP)   |
| C      | ** 75mm SYSTEM CAVITY TO ACCOMMODATE 50mm THICK INSULATION   |
| D      | ** 50mm INSULATION (OPTION BY INSITE)<br>FIRE STOP (OPTION BY INSITE)  |
| **     | OTHER OPTIONS AVAILABLE (PROJECT SPECIFIC)<br>95mm SYSTEM CAVITY FOR 75mm THICK INSULATION<br>120mm SYSTEM CAVITY FOR 100mm THICK INSULATION |

| PARTS LIST |  |
|------------|--|
| 1          | ENCLAD™ FOLDED ALUMINIUM PANEL                         |
| 2          | ENCLAD EN01 ALUMINIUM SUPPORT PROFILE                  |
| 3          | ENCLAD EN01 ALUMINIUM HELPING HAND BRACKET             |
| 4          | ENCLAD BRACKET TO RAIL FIXING (STAINLESS STEEL)        |
| 5          | ENCLAD HOST STRUCTURAL FIXING (STAINLESS STEEL)        |
| 6          | ENCLAD THERMAL ISOLATION PAD                           |
| 7          | ENCLAD ALUMINIUM CLOSURE                               |
| 8          | ENCLAD ALUMINIUM FLASHING                              |
| 9          | CAVITY INSULATION (OPTION BY INSITE)                   |
| 10         | BUILDING WRAP / MEMBRANE (OPTION BY INSITE)            |
| 11         | RIGID AIR BARRIER / SHEATHING BOARD (OPTION BY INSITE) |
| 12         | ALUMINIUM DOORS, WINDOWS & REVEALS (OPTION BY INSITE)  |
| 13         | WALL INSULATION (BY OTHERS)                            |
| 14         | PLASTER BOARD (BY OTHERS)                              |

| * SOLID SHEET OPTIONS |                      |
|-----------------------|----------------------|
| •                     | SOLID ALUMINIUM      |
| •                     | ALUCOLUX®            |
| •                     | PERFORATED ALUMINIUM |
| •                     | STAINLESS STEEL      |
| •                     | COPPER               |
| •                     | SOLID ZINC           |

Cladding Type :  
**ENCLAD™ SOLID SHEET \***

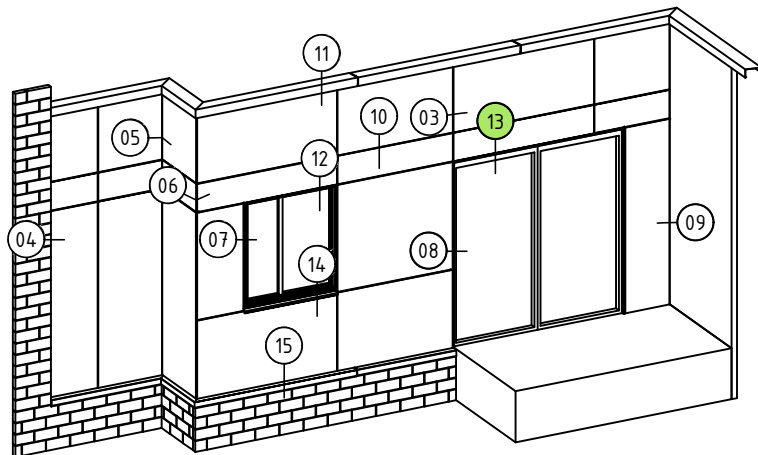
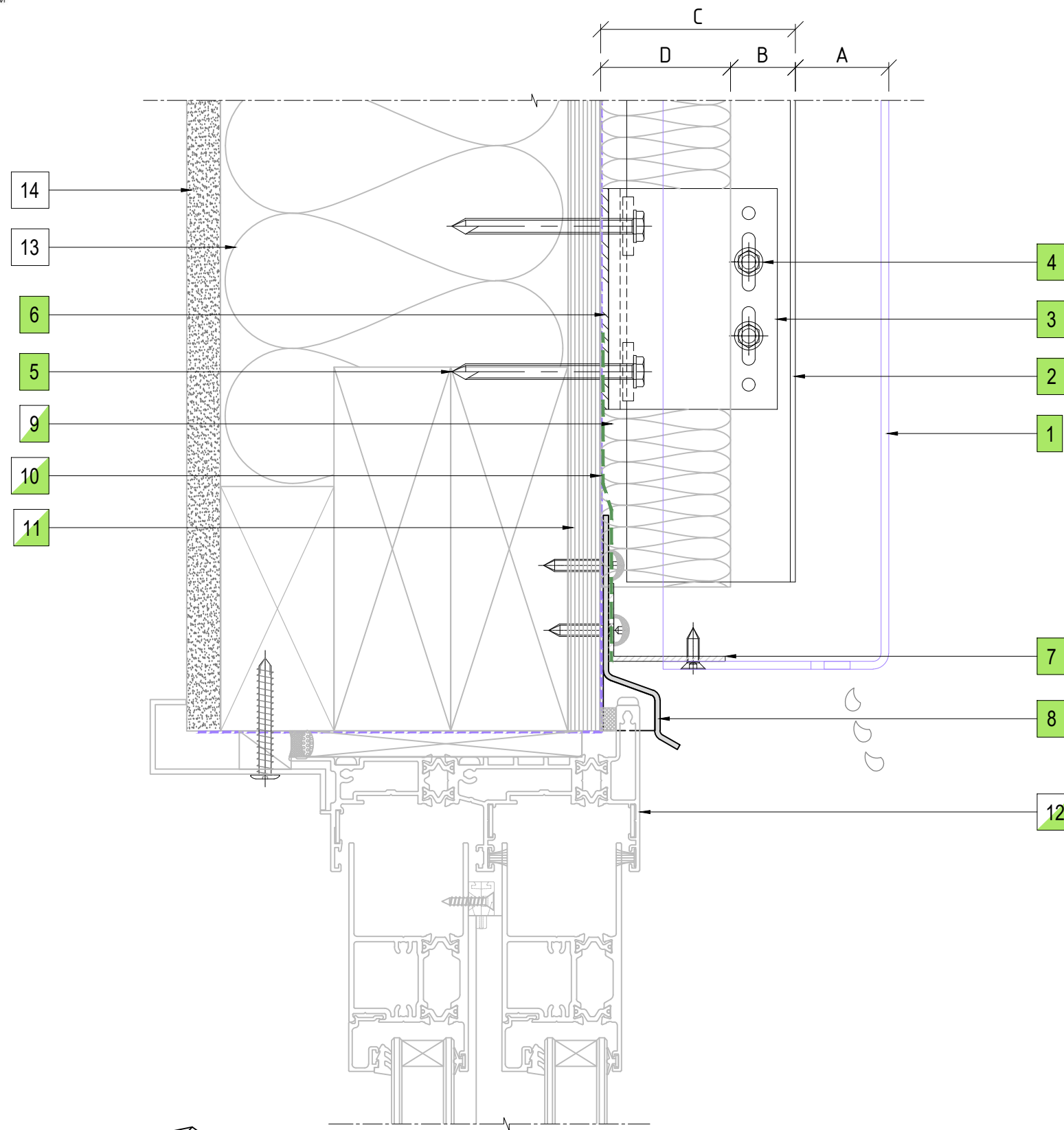
Support System :  
**ENCLAD™ EN01 - DISCREET FIXED**

Detail Description :  
**WINDOW HEAD DETAIL (SECTION VIEW)**

Scale @ A3 : 1:2  
Rev. : NOV 2022

System # :  
SS-EN01-DF1  
Detail # :  
12

**ENCLAD™ RAINSCREEN SYSTEMS**



13 DOOR HEAD DETAIL  
ENCLAD™ SOLID SHEET \*

**LEGEND**

|    |  |
|----|--|
| A  | ENCLAD™ SOLID SHEET *  |
| B  | 20mm - 25mm NOMINAL VENTILATION ZONE (AIR GAP)   |
| C  | ** 75mm SYSTEM CAVITY TO ACCOMMODATE 50mm THICK INSULATION   |
| D  | ** 50mm INSULATION (OPTION BY INSITE)<br>FIRE STOP (OPTION BY INSITE)  |
| ** | OTHER OPTIONS AVAILABLE (PROJECT SPECIFIC)<br>95mm SYSTEM CAVITY FOR 75mm THICK INSULATION<br>120mm SYSTEM CAVITY FOR 100mm THICK INSULATION |

**PARTS LIST**

|    |  |
|----|--|
| 1  | ENCLAD™ FOLDED ALUMINIUM PANEL                         |
| 2  | ENCLAD EN01 ALUMINIUM SUPPORT PROFILE                  |
| 3  | ENCLAD EN01 ALUMINIUM HELPING HAND BRACKET             |
| 4  | ENCLAD BRACKET TO RAIL FIXING (STAINLESS STEEL)        |
| 5  | ENCLAD HOST STRUCTURAL FIXING (STAINLESS STEEL)        |
| 6  | ENCLAD THERMAL ISOLATION PAD                           |
| 7  | ENCLAD ALUMINIUM CLOSURE                               |
| 8  | ENCLAD ALUMINIUM FLASHING                              |
| 9  | CAVITY INSULATION (OPTION BY INSITE)                   |
| 10 | BUILDING WRAP / MEMBRANE (OPTION BY INSITE)            |
| 11 | RIGID AIR BARRIER / SHEATHING BOARD (OPTION BY INSITE) |
| 12 | ALUMINIUM DOORS, WINDOWS & REVEALS (OPTION BY INSITE)  |
| 13 | WALL INSULATION (BY OTHERS)                            |
| 14 | PLASTER BOARD (BY OTHERS)                              |

**\* SOLID SHEET OPTIONS**

|   |                      |
|---|----------------------|
| • | SOLID ALUMINIUM      |
| • | ALUCOLUX®            |
| • | PERFORATED ALUMINIUM |
| • | STAINLESS STEEL      |
| • | COPPER               |
| • | SOLID ZINC           |

Cladding Type :

**ENCLAD™ SOLID SHEET \***

Support System :

**ENCLAD™ EN01 - DISCREET FIXED**

Detail Description :

**DOOR HEAD DETAIL (SECTION VIEW)**

Scale @ A3 : 1:2

Rev. : NOV 2022

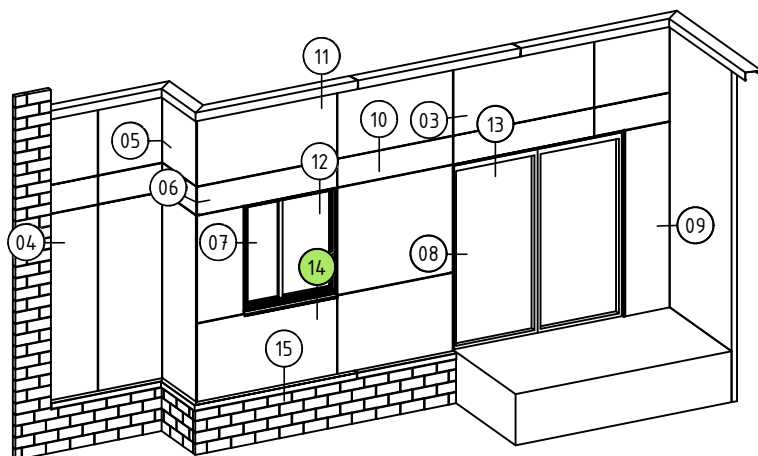
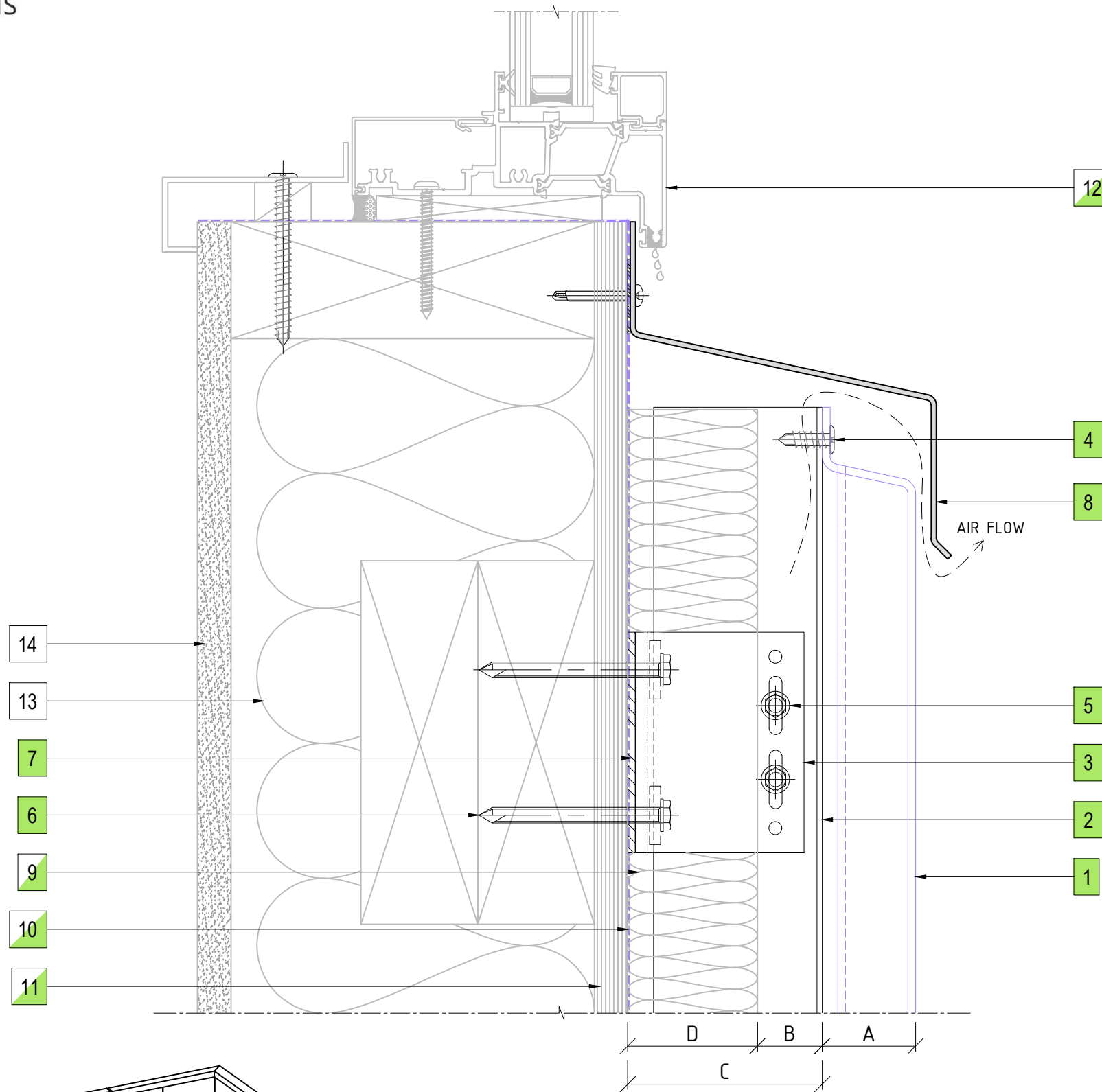
System # :

**SS-EN01-DF1**

Detail # :

**13**

**ENCLAD™ RAINSCREEN SYSTEMS**



14 WINDOW SILL DETAIL  
ENCLAD™ SOLID SHEET \*

**LEGEND**

|    |  |
|----|--|
| A  | ENCLAD™ SOLID SHEET *  |
| B  | 20mm - 25mm NOMINAL VENTILATION ZONE (AIR GAP)   |
| C  | ** 75mm SYSTEM CAVITY TO ACCOMMODATE 50mm THICK INSULATION   |
| D  | ** 50mm INSULATION (OPTION BY INSITE)<br>FIRE STOP (OPTION BY INSITE)  |
| ** | OTHER OPTIONS AVAILABLE (PROJECT SPECIFIC)<br>95mm SYSTEM CAVITY FOR 75mm THICK INSULATION<br>120mm SYSTEM CAVITY FOR 100mm THICK INSULATION |

**PARTS LIST**

|    |  |
|----|--|
| 1  | ENCLAD™ FOLDED ALUMINIUM PANEL                         |
| 2  | ENCLAD EN01 ALUMINIUM SUPPORT PROFILE                  |
| 3  | ENCLAD EN01 ALUMINIUM HELPING HAND BRACKET             |
| 4  | ENCLAD PANEL FIXING (STAINLESS STEEL)                  |
| 5  | ENCLAD BRACKET TO RAIL FIXING (STAINLESS STEEL)        |
| 6  | ENCLAD HOST STRUCTURAL FIXING (STAINLESS STEEL)        |
| 7  | ENCLAD THERMAL ISOLATION PAD                           |
| 8  | ENCLAD ALUMINIUM FLASHING                              |
| 9  | CAVITY INSULATION (OPTION BY INSITE)                   |
| 10 | BUILDING WRAP / MEMBRANE (OPTION BY INSITE)            |
| 11 | RIGID AIR BARRIER / SHEATHING BOARD (OPTION BY INSITE) |
| 12 | ALUMINIUM DOORS, WINDOWS & REVEALS (OPTION BY INSITE)  |
| 13 | WALL INSULATION (BY OTHERS)                            |
| 14 | PLASTER BOARD (BY OTHERS)                              |

**\* SOLID SHEET OPTIONS**

|   |                      |
|---|----------------------|
| • | SOLID ALUMINIUM      |
| • | ALUCOLUX®            |
| • | PERFORATED ALUMINIUM |
| • | STAINLESS STEEL      |
| • | COPPER               |
| • | SOLID ZINC           |

Cladding Type :

**ENCLAD™ SOLID SHEET \***

Support System :

**ENCLAD™ EN01 - DISCREET FIXED**

Detail Description :

**WINDOW SILL DETAIL (SECTION VIEW)**

Scale @ A3 : 1:2

Rev. : NOV 2022

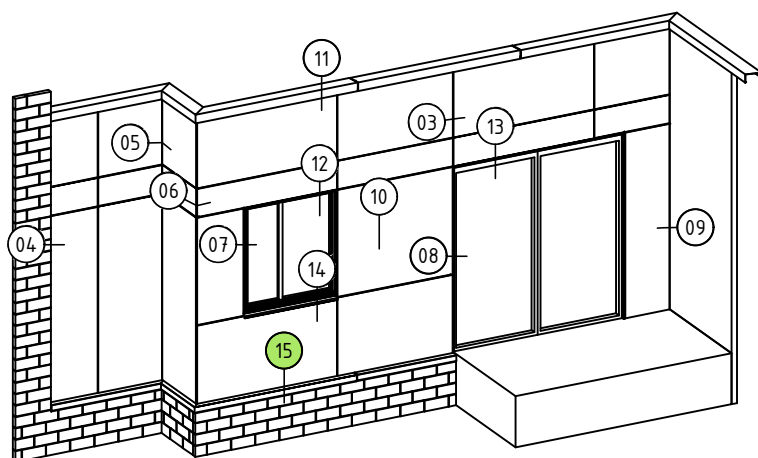
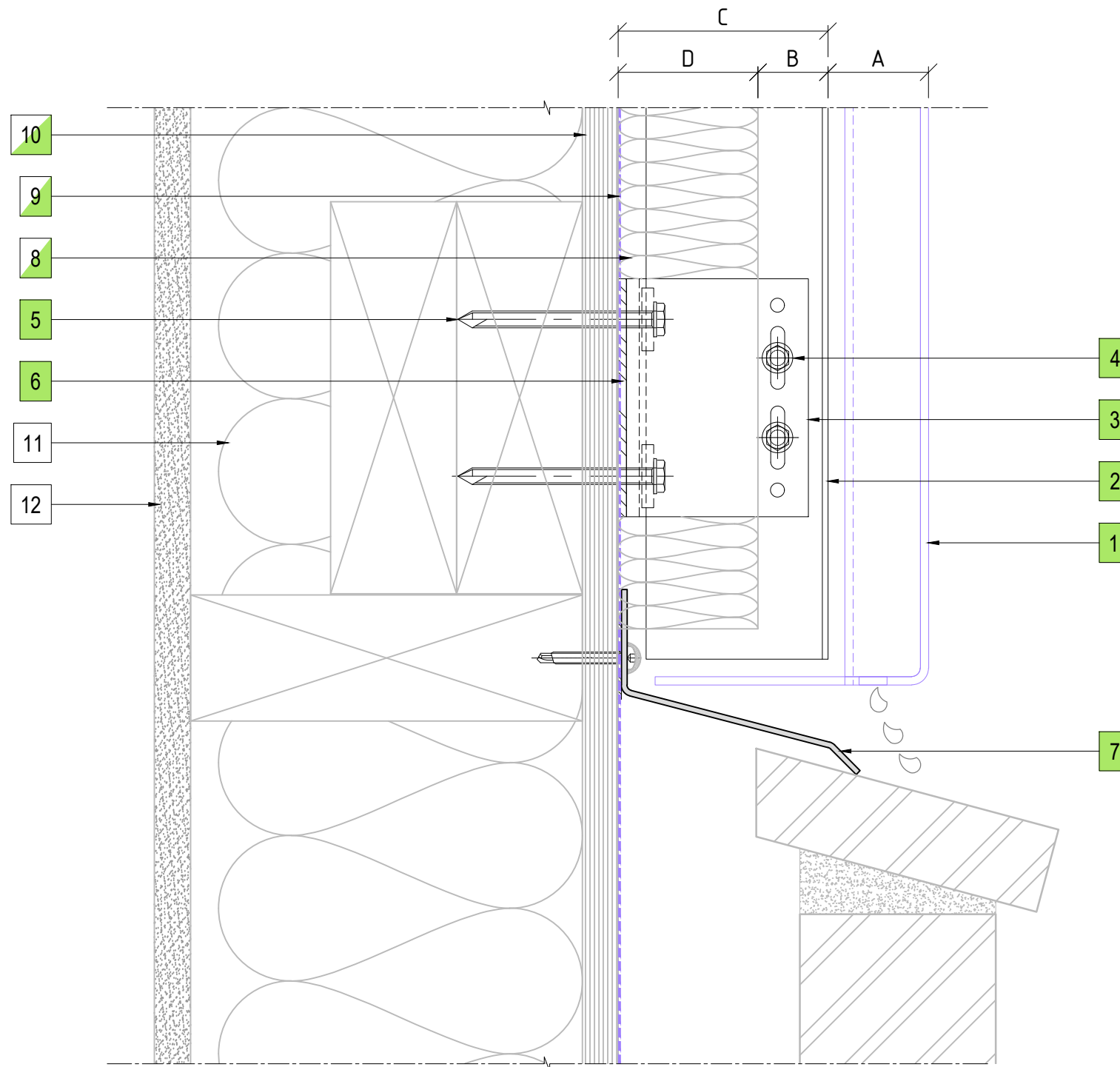
System # :

**SS-EN01-DF1**

Detail # :

**14**

**ENCLAD™ RAINSCREEN SYSTEMS**



15 BRICKWALL AT BASE DRIP DETAIL  
ENCLAD™ SOLID SHEET \*

**LEGEND**

|    |  |
|----|--|
| A  | ENCLAD™ SOLID SHEET *  |
| B  | 20mm - 25mm NOMINAL VENTILATION ZONE (AIR GAP)   |
| C  | ** 75mm SYSTEM CAVITY TO ACCOMMODATE 50mm THICK INSULATION   |
| D  | ** 50mm INSULATION (OPTION BY INSITE)<br>FIRE STOP (OPTION BY INSITE)  |
| ** | OTHER OPTIONS AVAILABLE (PROJECT SPECIFIC)<br>95mm SYSTEM CAVITY FOR 75mm THICK INSULATION<br>120mm SYSTEM CAVITY FOR 100mm THICK INSULATION |

**PARTS LIST**

|    |  |
|----|--|
| 1  | ENCLAD™ FOLDED ALUMINIUM PANEL                         |
| 2  | ENCLAD EN01 ALUMINIUM SUPPORT PROFILE                  |
| 3  | ENCLAD EN01 ALUMINIUM HELPING HAND BRACKET             |
| 4  | ENCLAD BRACKET TO RAIL FIXING (STAINLESS STEEL)        |
| 5  | ENCLAD HOST STRUCTURAL FIXING (STAINLESS STEEL)        |
| 6  | ENCLAD THERMAL ISOLATION PAD                           |
| 7  | ENCLAD ALUMINIUM FLASHING                              |
| 8  | CAVITY INSULATION (OPTION BY INSITE)                   |
| 9  | BUILDING WRAP / MEMBRANE (OPTION BY INSITE)            |
| 10 | RIGID AIR BARRIER / SHEATHING BOARD (OPTION BY INSITE) |
| 11 | WALL INSULATION (BY OTHERS)                            |
| 12 | PLASTER BOARD (BY OTHERS)                              |

**\* SOLID SHEET OPTIONS**

|   |                      |
|---|----------------------|
| • | SOLID ALUMINIUM      |
| • | ALUCOLUX®            |
| • | PERFORATED ALUMINIUM |
| • | STAINLESS STEEL      |
| • | COPPER               |
| • | SOLID ZINC           |

Cladding Type :

**ENCLAD™ SOLID SHEET \***

Support System :

**ENCLAD™ EN01 - DISCREET FIXED**

Detail Description :

**BRICKWALL AT BASE DRIP DETAIL (SECTION VIEW)**

Scale @ A3 : 1:2

Rev. : NOV 2022

System # :

**SS-EN01-DF1**

Detail # :

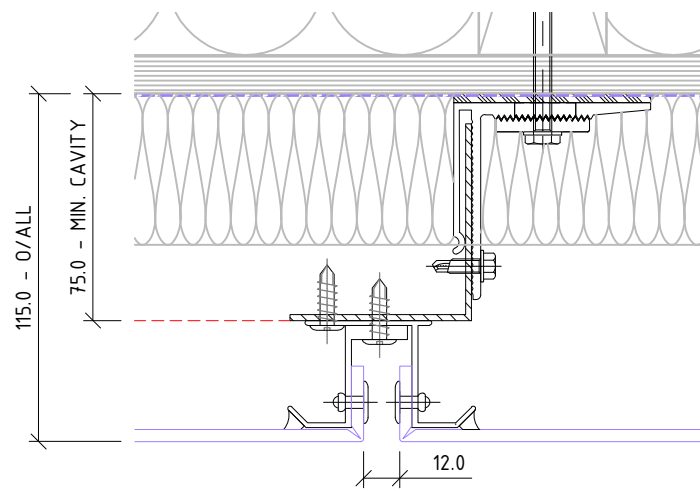
**15**

**ENCLAD™ RAINSCREEN SYSTEMS**

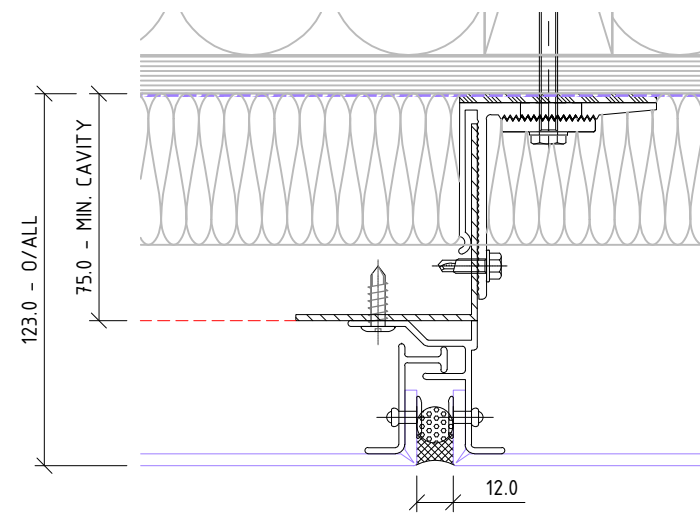


**LEGEND**

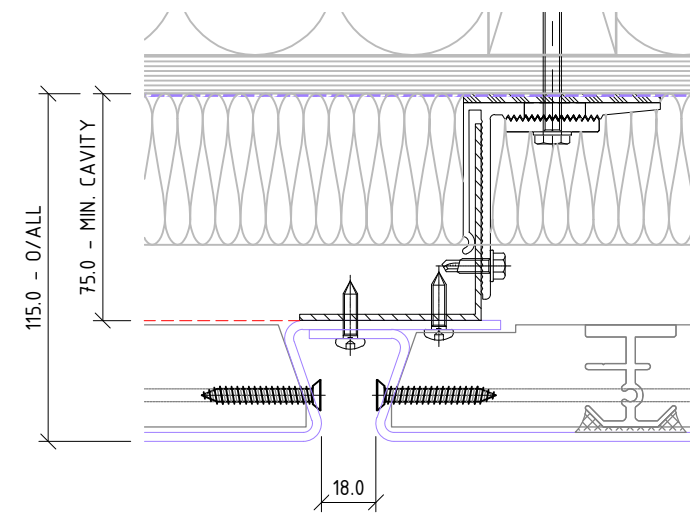
|    |  |
|----|--|
| A  | ENCLAD™ SOLID SHEET *  |
| B  | 20mm - 25mm NOMINAL VENTILATION ZONE (AIR GAP)   |
| C  | ** 75mm SYSTEM CAVITY TO ACCOMMODATE 50mm THICK INSULATION   |
| D  | ** 50mm INSULATION (OPTION BY INSITE)<br>FIRE STOP (OPTION BY INSITE)  |
| ** | OTHER OPTIONS AVAILABLE (PROJECT SPECIFIC)<br>95mm SYSTEM CAVITY FOR 75mm THICK INSULATION<br>120mm SYSTEM CAVITY FOR 100mm THICK INSULATION |



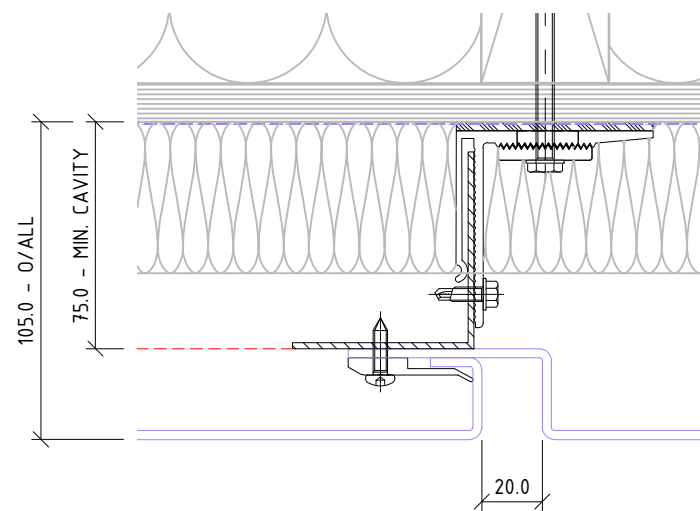
**SS-EN01-DF2**



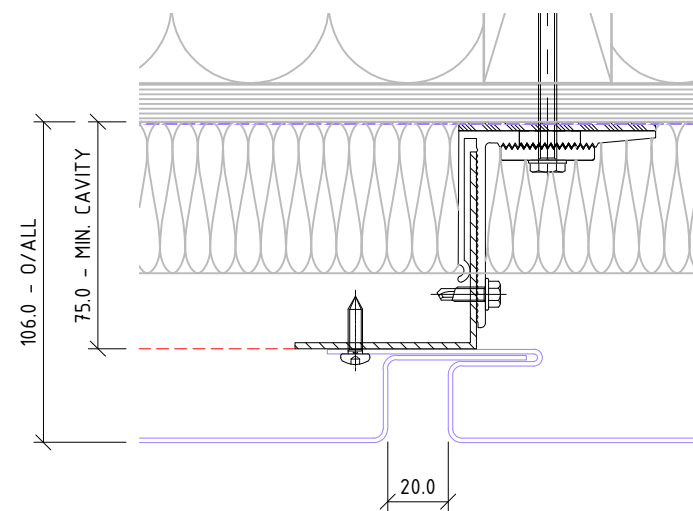
**SS-EN01-DF3**



**SS-EN01-DF1**



**SS-EN01-SF1**



**SS-EN01-SF3**

**\* SOLID SHEET OPTIONS**

|   |                      |
|---|----------------------|
| • | SOLID ALUMINIUM      |
| • | ALUCOLUX®            |
| • | PERFORATED ALUMINIUM |
| • | STAINLESS STEEL      |
| • | COPPER               |
| • | SOLID ZINC           |

Cladding Type :

**ENCLAD™ SOLID SHEET \***

Support System :

**ENCLAD™ EN01 - DISCREET FIXED**

Detail Description :

**JOINT DETAIL OPTIONS (PLAN VIEW)**

Scale @ A3 : 1:2.5

Rev. : NOV 2022

System # :

**SS-EN01-DF1**

Detail # :

**16**

**ENCLAD™ RAINSCREEN SYSTEMS**