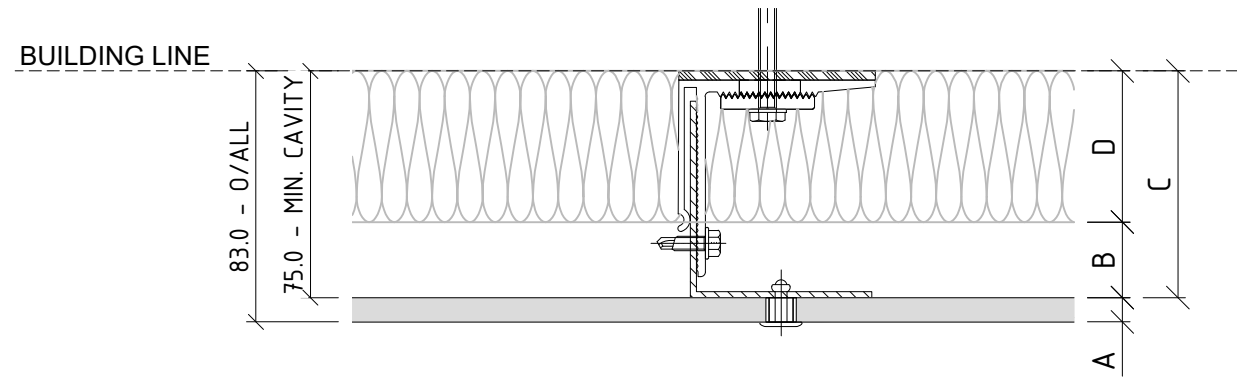
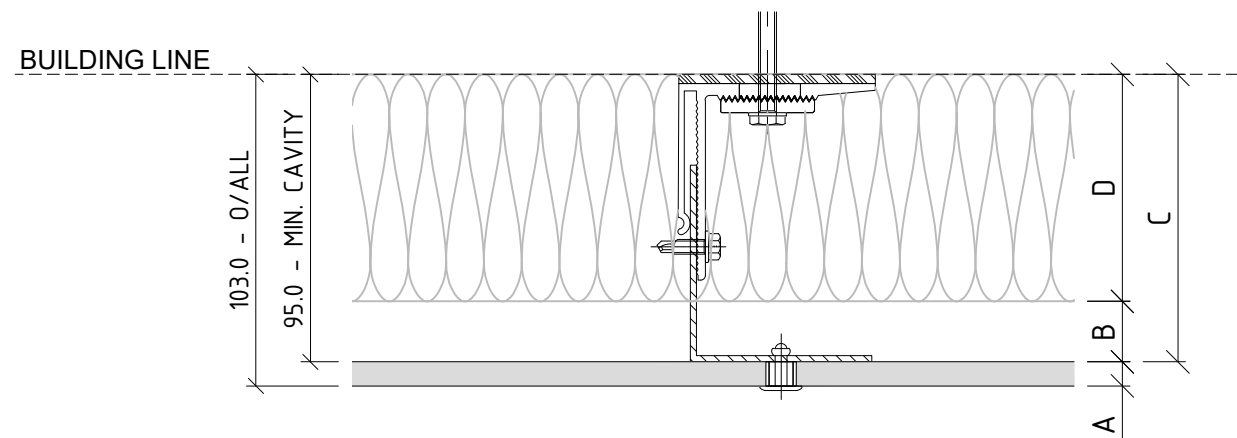




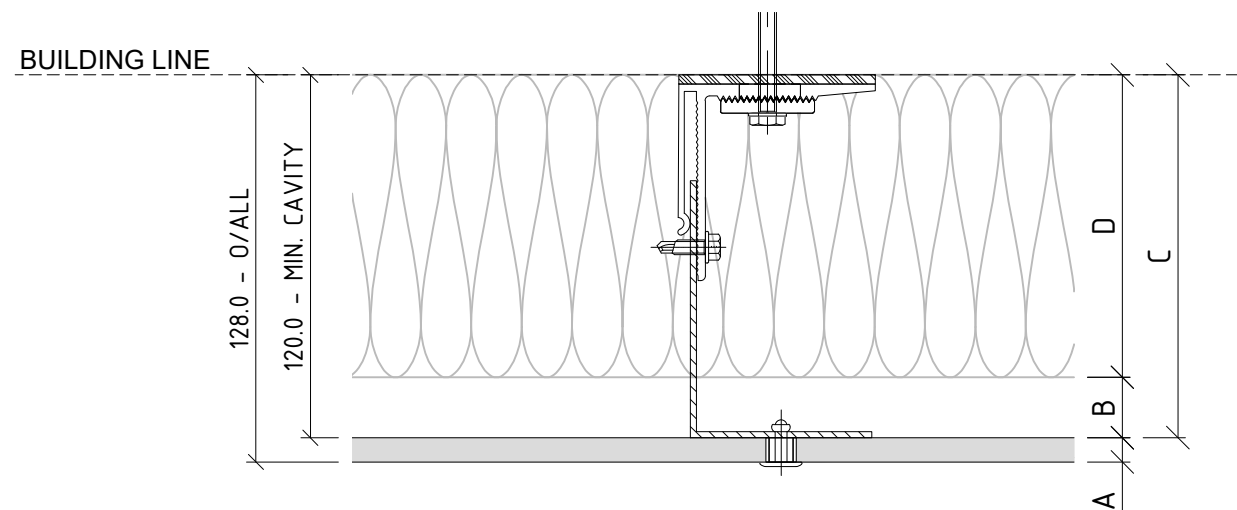
EN01 - ADJUSTABLE SYSTEM CAVITY



50mm THICK INSULATION  
IN CAVITY ZONE



75mm THICK INSULATION  
IN CAVITY ZONE



100mm THICK INSULATION  
IN CAVITY ZONE

01 CAVITY SET OUT  
ENCLAD™ HPL PANEL

ADJUSTABLE SYSTEMS ACCOMODATE BUILDING TOLERANCE AND INCORPORATION OF INSULATION FOR H1 REQUIREMENTS - STANDARD SYSTEM CAVITY SHOWN - BESPOKE OPTIONS AVAILABLE FOR PROJECT SPECIFIC REQUIREMENTS

PART OF THE THERMOSASH GROUP COMPANIES :



COPYRIGHT : THESE DESIGNS, DETAILS AND/OR SPECIFICATIONS AND THE COPYRIGHT THEREIN, REMAIN THE PROPERTY OF INSITE FACADES LTD.

DISCLAIMER : THESE DETAILS ARE PROVIDED FOR INDICATIVE PURPOSES ONLY. CONSTRUCTION/SYSTEM DETAILS CAN VARY DEPENDING ON PROJECT SPECIFIC SPECIFICATION AND ENGINEERING REQUIREMENTS. THE DESIGNER IS RESPONSIBLE FOR ENSURING DETAILS SATISFY ALL NEW ZEALAND BUILDING CODE CLAUSES. THE DESIGNER IS RESPONSIBLE FOR ENSURING BUILDING WRAPS, FIRESTOPS AND INSULATION/SPECIFICATION COMPLY WITH MANUFACTURERS RECOMMENDATIONS AND NZBC REGULATIONS. REFER TO INSITE WEBSITE FOR FULL TERMS AND CONDITIONS.

**LEGEND**

A	ENCLAD™ HIGH PRESSURE LAMINATE
B	20mm - 25mm NOMINAL VENTILATION ZONE (AIR GAP)
C	* 75mm SYSTEM CAVITY TO ACCOMMODATE 50mm THICK INSULATION
D	* 50mm INSULATION (OPTION BY INSITE) FIRE STOP (OPTION BY INSITE)
*	OTHER OPTIONS AVAILABLE (PROJECT SPECIFIC) 95mm SYSTEM CAVITY FOR 75mm THICK INSULATION 120mm SYSTEM CAVITY FOR 100mm THICK INSULATION

Cladding Type :  
**ENCLAD™ HPL - HIGH PRESSURE LAMINATE**

Support System :  
**ENCLAD™ EN01 - VISIBLE FIXED**

Detail Description :  
CAVITY SETOUT (PLAN VIEW)

Scale @ A3 : 1:2.5

Rev. : NOV 2022

System # :  
HPL-EN01-VF1

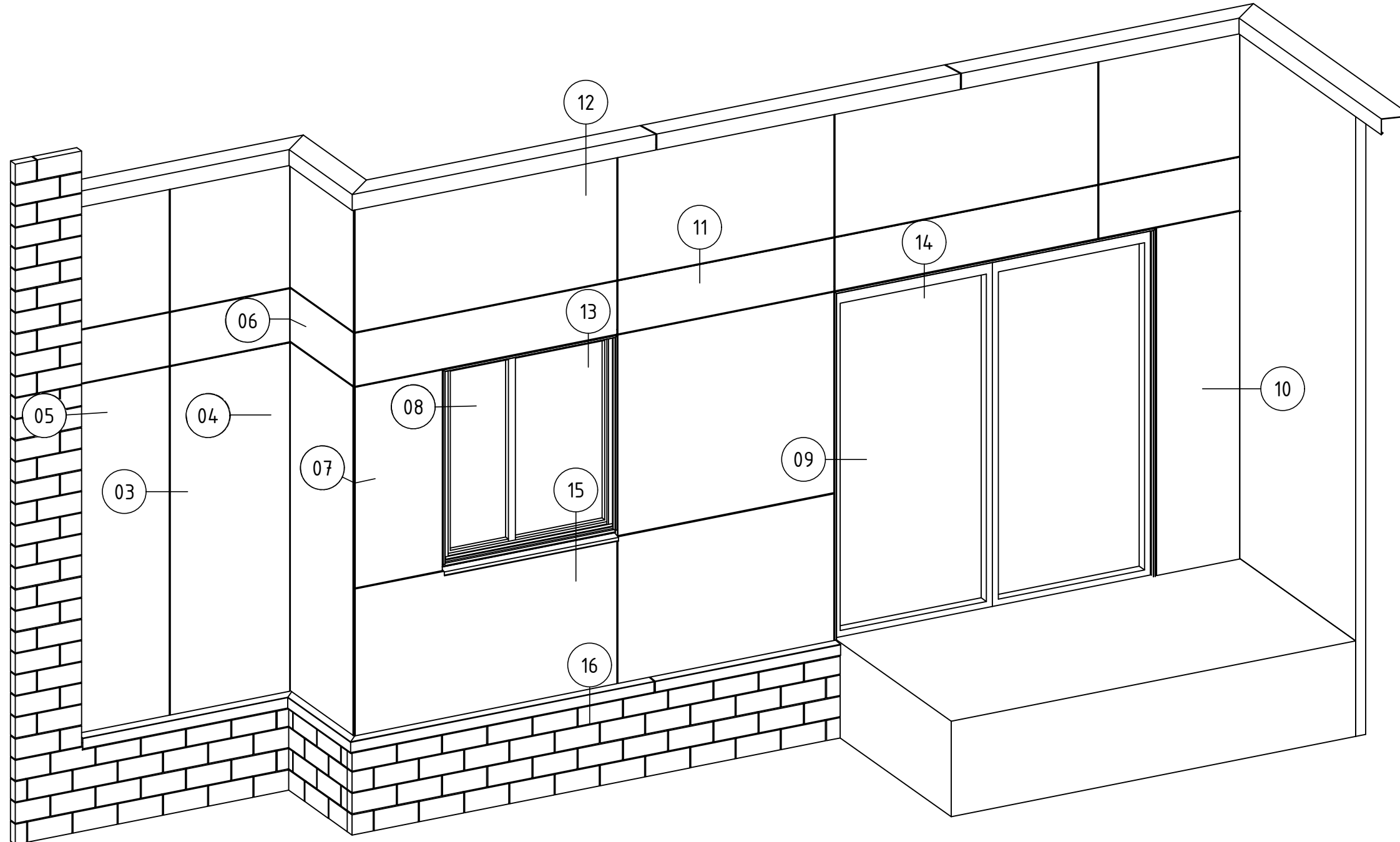
Detail # :  
01

**ENCLAD™ RAINSCREEN SYSTEMS**



101 STATION ROAD, PENROSE,  
AUCKLAND 1061  
NEW ZEALAND

P: +64 9 307 1529  
www.insitefacades.co.nz



02 SCHEMATIC  
ENCLAD™ HPL PANEL

Cladding Type :  
**ENCLAD™ HPL - HIGH PRESSURE LAMINATE**

Support System :  
**ENCLAD™ EN01 - VISIBLE FIXED**

Detail Description :  
SCHEMATIC

Scale @ A3 : 1:5

Rev. : NOV 2022

System # :  
HPL-EN01-VF1

Detail # :  
02

**ENCLAD™ RAINSCREEN SYSTEMS**





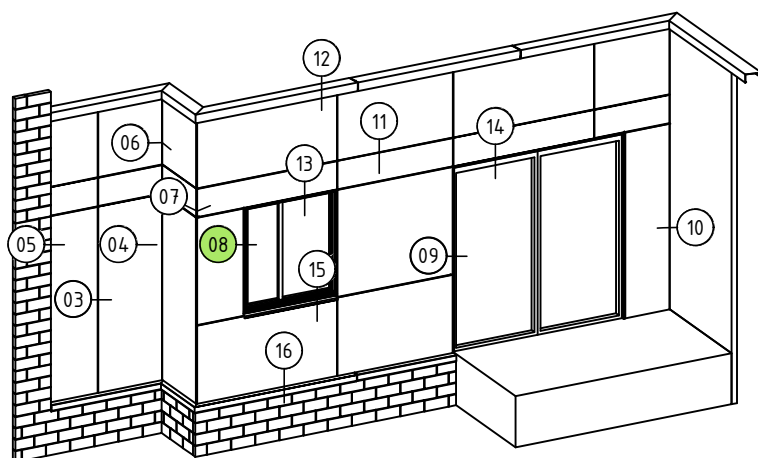
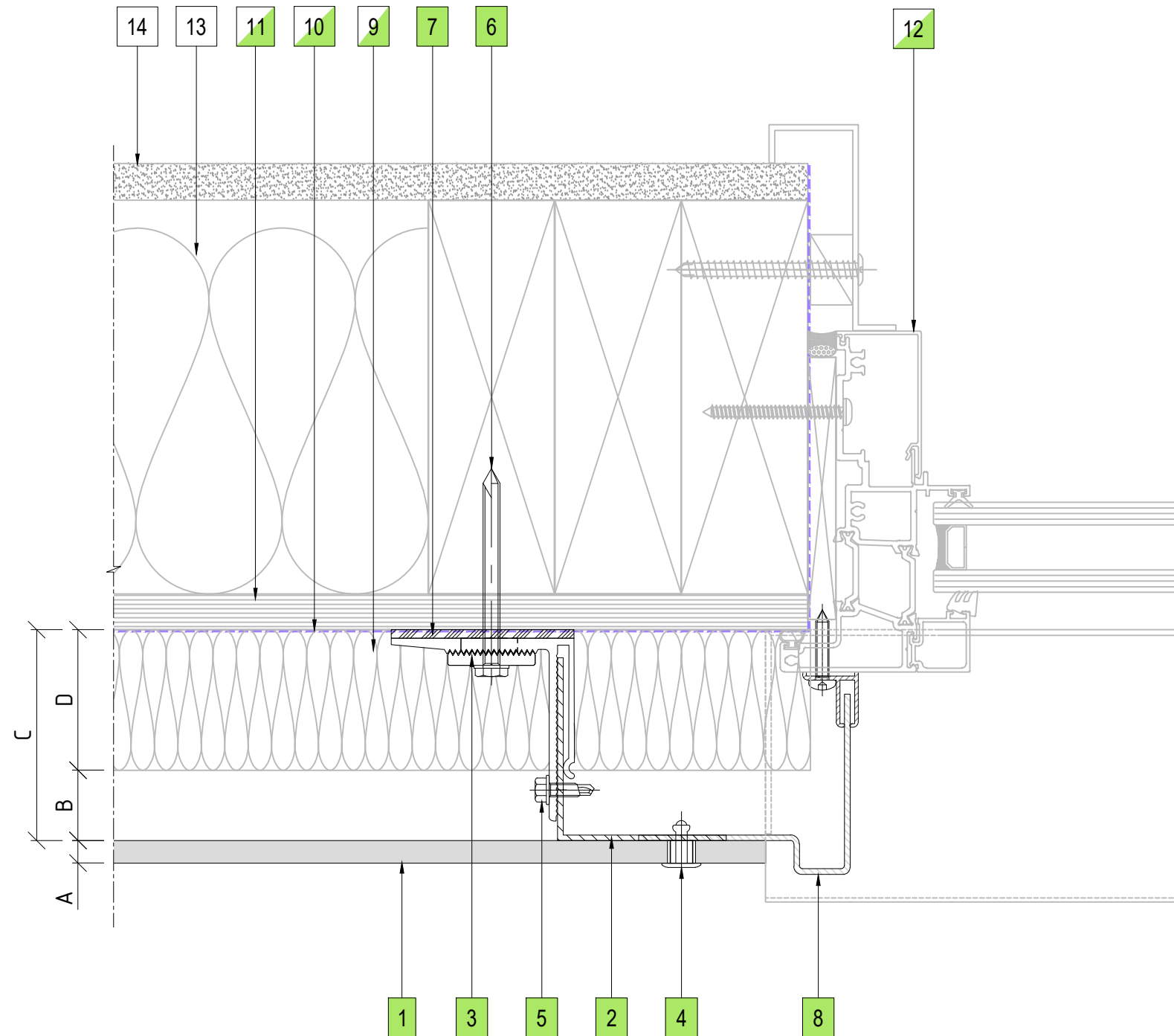












08 WINDOW JAMB DETAIL  
ENCLAD™ HPL PANEL

**LEGEND**

A	ENCLAD™ HIGH PRESSURE LAMINATE
B	20mm - 25mm NOMINAL VENTILATION ZONE (AIR GAP)
C	* 75mm SYSTEM CAVITY TO ACCOMMODATE 50mm THICK INSULATION
D	* 50mm INSULATION (OPTION BY INSITE) FIRE STOP (OPTION BY INSITE)
*	OTHER OPTIONS AVAILABLE (PROJECT SPECIFIC) 95mm SYSTEM CAVITY FOR 75mm THICK INSULATION 120mm SYSTEM CAVITY FOR 100mm THICK INSULATION

**PARTS LIST**

1	ENCLAD™ HPL PANEL
2	ENCLAD EN01 ALUMINIUM SUPPORT PROFILE
3	ENCLAD EN01 ALUMINIUM HELPING HAND BRACKET
4	ENCLAD PANEL FIXING (STAINLESS STEEL)
5	ENCLAD BRACKET TO RAIL FIXING (STAINLESS STEEL)
6	ENCLAD HOST STRUCTURAL FIXING (STAINLESS STEEL)
7	ENCLAD THERMAL ISOLATION PAD
8	ENCLAD ALUMINIUM CLOSURE
9	CAVITY INSULATION (OPTION BY INSITE)
10	BUILDING WRAP / MEMBRANE (OPTION BY INSITE)
11	RIGID AIR BARRIER / SHEATHING BOARD (OPTION BY INSITE)
12	ALUMINIUM DOORS, WINDOWS & REVEALS (OPTION BY INSITE)
13	WALL INSULATION (BY OTHERS)
14	PLASTER BOARD (BY OTHERS)

Cladding Type :

**ENCLAD™ HPL -  
HIGH PRESSURE LAMINATE**

Support System :

**ENCLAD™ EN01 - VISIBLE FIXED**

Detail Description :

WINDOW JAMB DETAIL (PLAN VIEW)

Scale @ A3 : 1:2

Rev. : NOV 2022

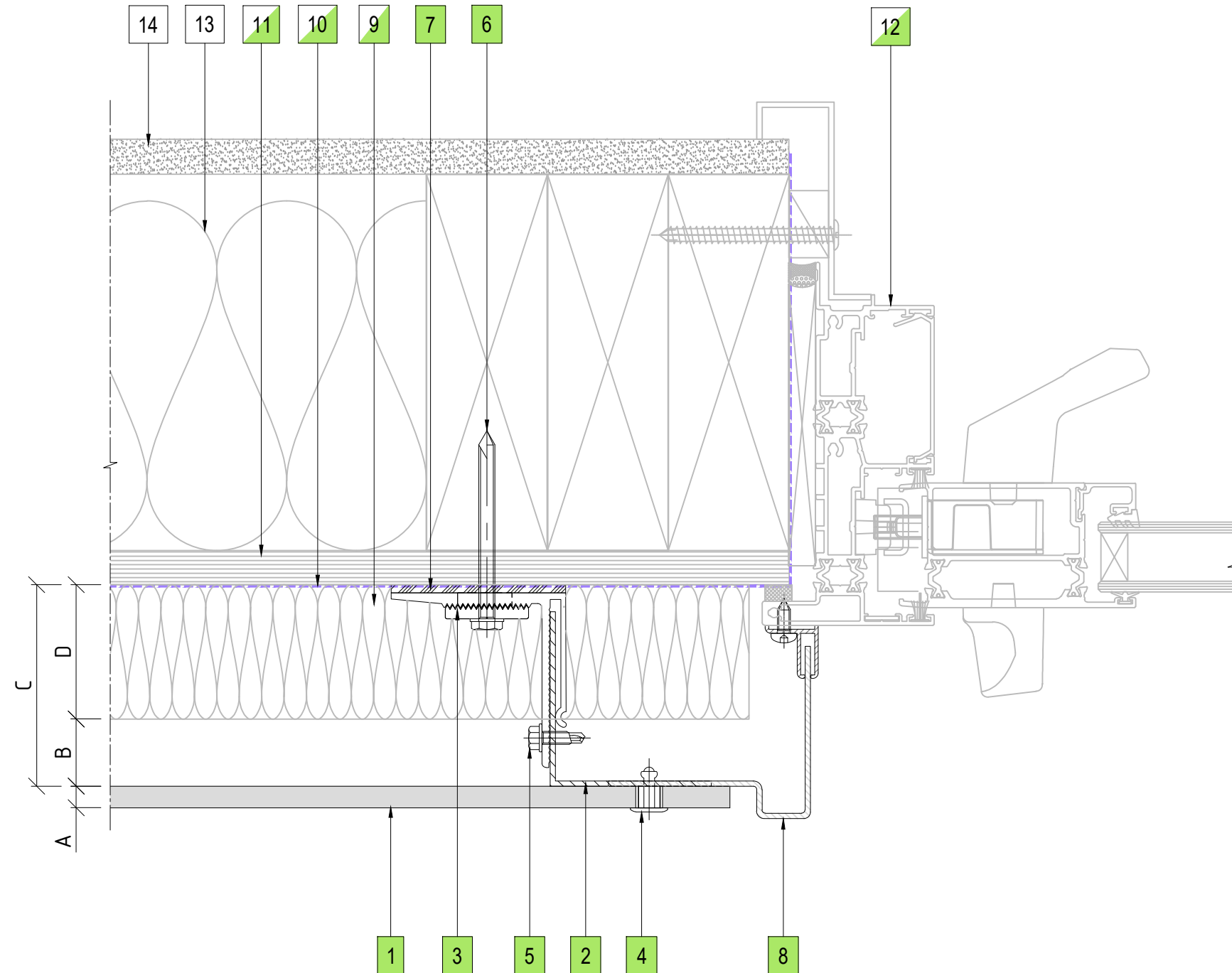
System # :

HPL-EN01-VF1

Detail # :

08

**ENCLAD™ RAINSCREEN SYSTEMS**



**LEGEND**

A	ENCLAD™ HIGH PRESSURE LAMINATE
B	20mm - 25mm NOMINAL VENTILATION ZONE (AIR GAP)
C	* 75mm SYSTEM CAVITY TO ACCOMMODATE 50mm THICK INSULATION
D	* 50mm INSULATION (OPTION BY INSITE) FIRE STOP (OPTION BY INSITE)
*	OTHER OPTIONS AVAILABLE (PROJECT SPECIFIC) 95mm SYSTEM CAVITY FOR 75mm THICK INSULATION 120mm SYSTEM CAVITY FOR 100mm THICK INSULATION

**PARTS LIST**

1	ENCLAD™ HPL PANEL
2	ENCLAD EN01 ALUMINIUM SUPPORT PROFILE
3	ENCLAD EN01 ALUMINIUM HELPING HAND BRACKET
4	ENCLAD PANEL FIXING (STAINLESS STEEL)
5	ENCLAD BRACKET TO RAIL FIXING (STAINLESS STEEL)
6	ENCLAD HOST STRUCTURAL FIXING (STAINLESS STEEL)
7	ENCLAD THERMAL ISOLATION PAD
8	ENCLAD ALUMINIUM CLOSURE
9	CAVITY INSULATION (OPTION BY INSITE)
10	BUILDING WRAP / MEMBRANE (OPTION BY INSITE)
11	RIGID AIR BARRIER / SHEATHING BOARD (OPTION BY INSITE)
12	ALUMINIUM DOORS, WINDOWS & REVEALS (OPTION BY INSITE)
13	WALL INSULATION (BY OTHERS)
14	PLASTER BOARD (BY OTHERS)

Cladding Type :

**ENCLAD™ HPL -  
HIGH PRESSURE LAMINATE**

Support System :

**ENCLAD™ EN01 - VISIBLE FIXED**

Detail Description :

**DOOR JAMB DETAIL (PLAN VIEW)**

Scale @ A3 : 1:2

Rev. : NOV 2022

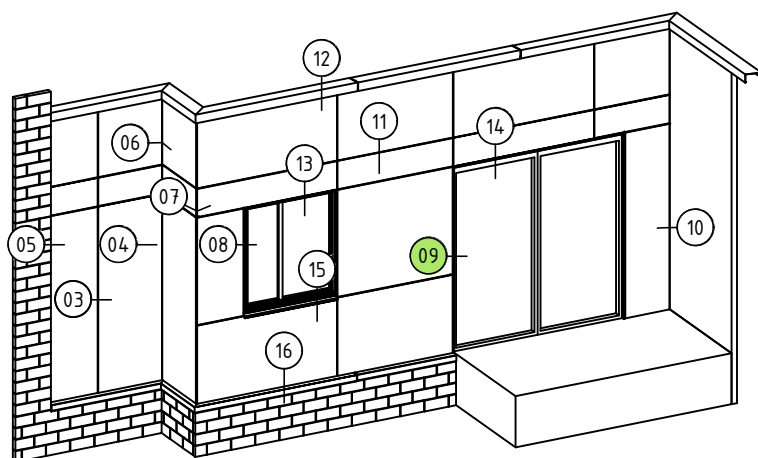
System # :

**HPL-EN01-VF1**

Detail # :

**09**

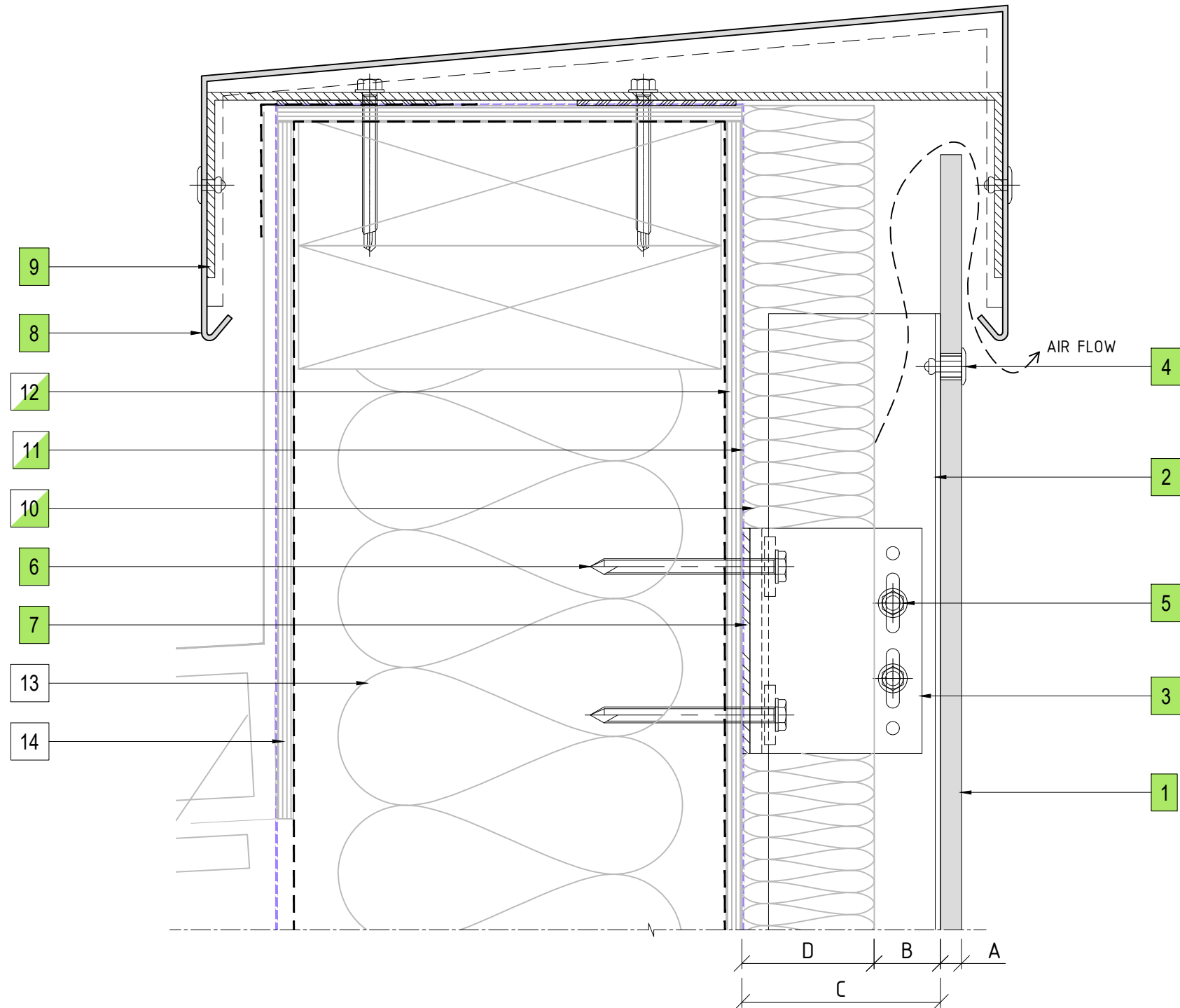
**ENCLAD™ RAINSCREEN SYSTEMS**



09 DOOR JAMB DETAIL  
ENCLAD™ HPL PANEL







**LEGEND**

A	ENCLAD™ HIGH PRESSURE LAMINATE
B	20mm - 25mm NOMINAL VENTILATION ZONE (AIR GAP)
C	* 75mm SYSTEM CAVITY TO ACCOMMODATE 50mm THICK INSULATION
D	* 50mm INSULATION (OPTION BY INSITE) FIRE STOP (OPTION BY INSITE)
*	OTHER OPTIONS AVAILABLE (PROJECT SPECIFIC) 95mm SYSTEM CAVITY FOR 75mm THICK INSULATION 120mm SYSTEM CAVITY FOR 100mm THICK INSULATION

**PARTS LIST**

1	ENCLAD™ HPL PANEL
2	ENCLAD EN01 ALUMINIUM SUPPORT PROFILE
3	ENCLAD EN01 ALUMINIUM HELPING HAND BRACKET
4	ENCLAD PANEL FIXING (STAINLESS STEEL)
5	ENCLAD BRACKET TO RAIL FIXING (STAINLESS STEEL)
6	ENCLAD HOST STRUCTURAL FIXING (STAINLESS STEEL)
7	ENCLAD THERMAL ISOLATION PAD
8	ENCLAD ALUMINIUM FLASHING
9	ENCLAD ALUMINIUM BRACKET
10	CAVITY INSULATION (OPTION BY INSITE)
11	BUILDING WRAP / MEMBRANE (OPTION BY INSITE)
12	RIGID AIR BARRIER / SHEATHING BOARD (OPTION BY INSITE)
13	WALL INSULATION (BY OTHERS)
14	PLASTER BOARD (BY OTHERS)

Cladding Type :

**ENCLAD™ HPL - HIGH PRESSURE LAMINATE**

Support System :

**ENCLAD™ EN01 - VISIBLE FIXED**

Detail Description :

**PARAPET FLASHING DETAIL (SECTION VIEW)**

Scale @ A3 : 1:2

Rev. : NOV 2022

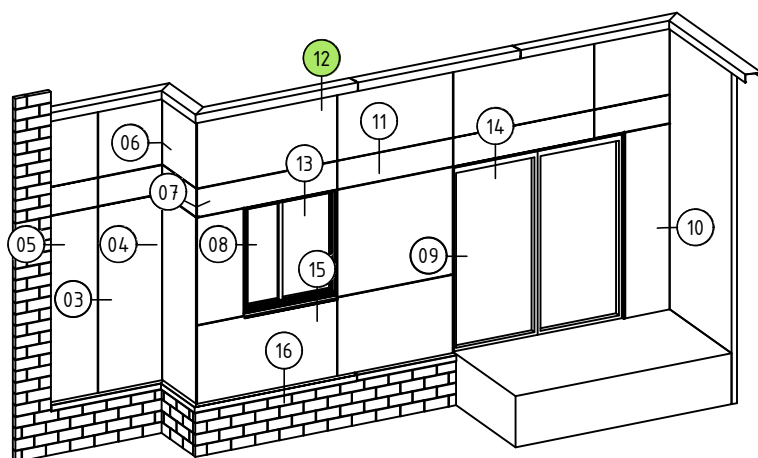
System # :

**HPL-EN01-VF1**

Detail # :

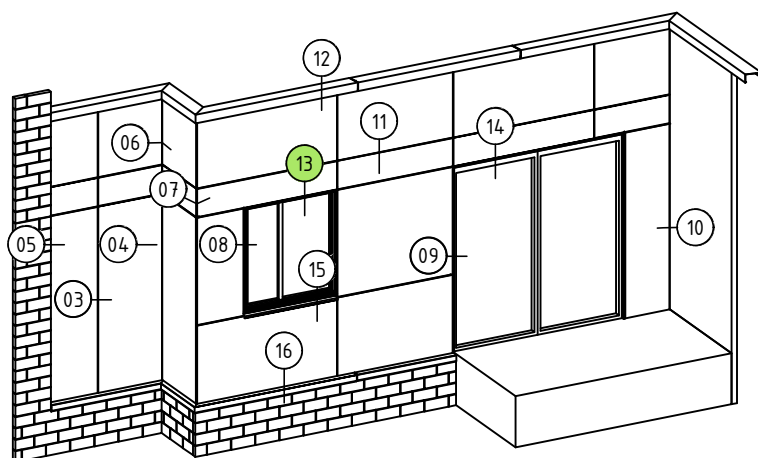
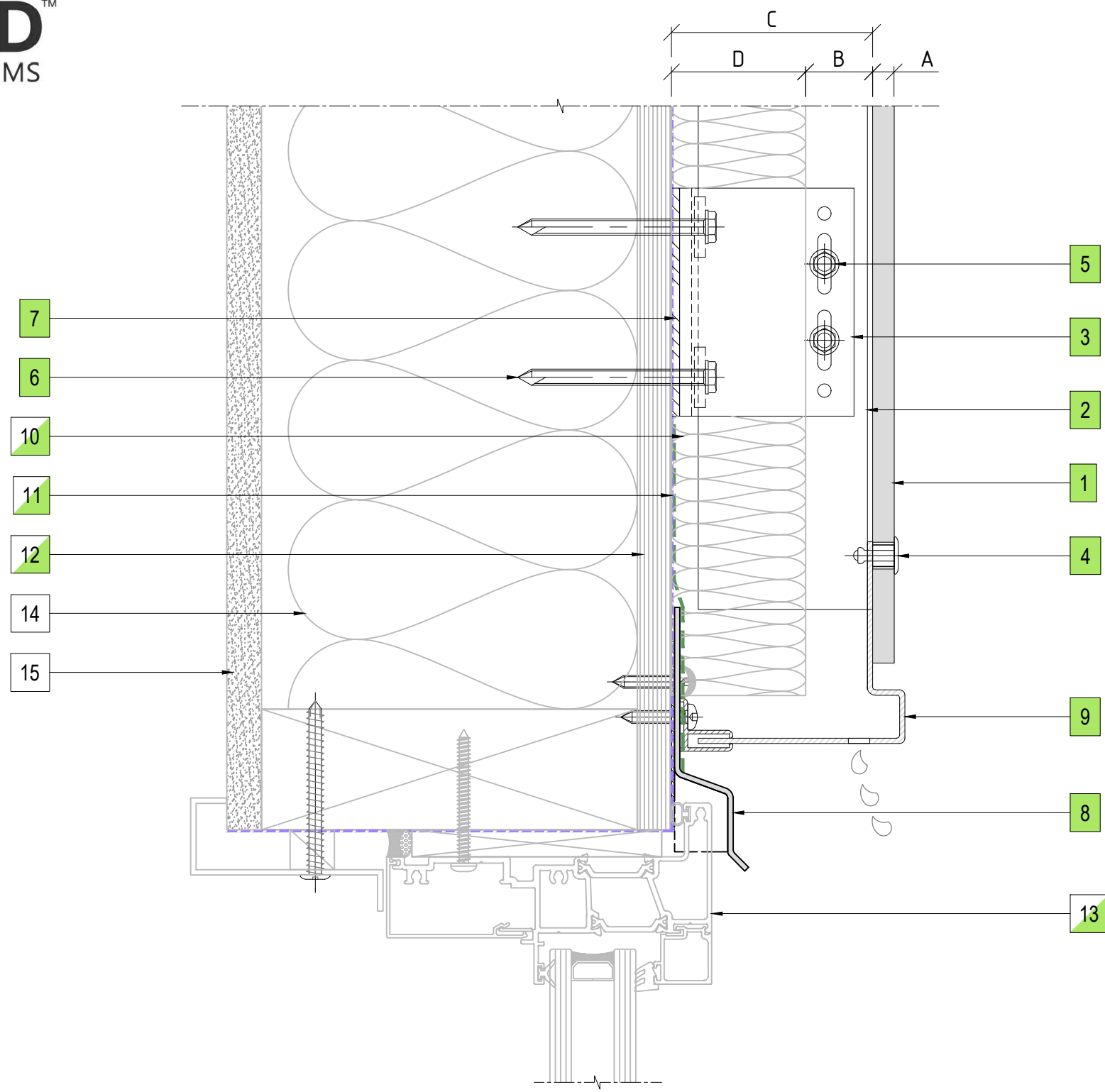
**12**

**ENCLAD™ RAINSCREEN SYSTEMS**



**12** PARAPET FLASHING DETAIL  
ENCLAD™ HPL PANEL





13 WINDOW HEAD DETAIL  
ENCLAD™ HPL PANEL

**COPYRIGHT :** THESE DESIGNS, DETAILS AND/OR SPECIFICATIONS AND THE COPYRIGHT THEREIN, REMAIN THE PROPERTY OF INSITE FACADES LTD.

**DISCLAIMER :** THESE DETAILS ARE PROVIDED FOR INDICATIVE PURPOSES ONLY. CONSTRUCTION/SYSTEM DETAILS CAN VARY DEPENDING ON PROJECT SPECIFIC SPECIFICATION AND ENGINEERING REQUIREMENTS. THE DESIGNER IS RESPONSIBLE FOR ENSURING DETAILS SATISFY ALL NEW ZEALAND BUILDING CODE CLAUSES. THE DESIGNER IS RESPONSIBLE FOR ENSURING BUILDING WRAPS, FIRESTOPS AND INSULATION/SPECIFICATION COMPLY WITH MANUFACTURERS RECOMMENDATIONS AND NZBC REGULATIONS. REFER TO INSITE WEBSITE FOR FULL TERMS AND CONDITIONS.

LEGEND	
A	ENCLAD™ HIGH PRESSURE LAMINATE
B	20mm - 25mm NOMINAL VENTILATION ZONE (AIR GAP)
C	* 75mm SYSTEM CAVITY TO ACCOMMODATE 50mm THICK INSULATION
D	* 50mm INSULATION (OPTION BY INSITE) FIRE STOP (OPTION BY INSITE)
*	OTHER OPTIONS AVAILABLE (PROJECT SPECIFIC) 95mm SYSTEM CAVITY FOR 75mm THICK INSULATION 120mm SYSTEM CAVITY FOR 100mm THICK INSULATION

PARTS LIST	
1	ENCLAD™ HPL PANEL
2	ENCLAD EN01 ALUMINIUM SUPPORT PROFILE
3	ENCLAD EN01 ALUMINIUM HELPING HAND BRACKET
4	ENCLAD PANEL FIXING (STAINLESS STEEL)
5	ENCLAD BRACKET TO RAIL FIXING (STAINLESS STEEL)
6	ENCLAD HOST STRUCTURAL FIXING (STAINLESS STEEL)
7	ENCLAD THERMAL ISOLATION PAD
8	ENCLAD ALUMINIUM FLASHING
9	ENCLAD ALUMINIUM CLOSURE
10	CAVITY INSULATION (OPTION BY INSITE)
11	BUILDING WRAP / MEMBRANE (OPTION BY INSITE)
12	RIGID AIR BARRIER / SHEATHING BOARD (OPTION BY INSITE)
13	ALUMINIUM DOORS, WINDOWS & REVEALS (OPTION BY INSITE)
14	WALL INSULATION (BY OTHERS)
15	PLASTER BOARD (BY OTHERS)

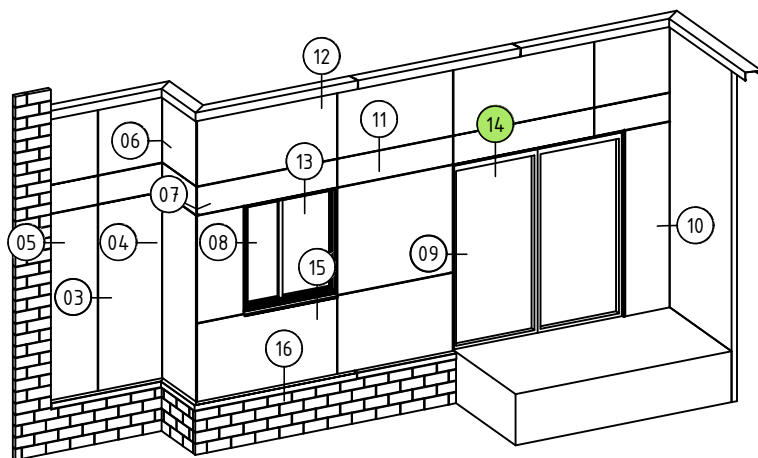
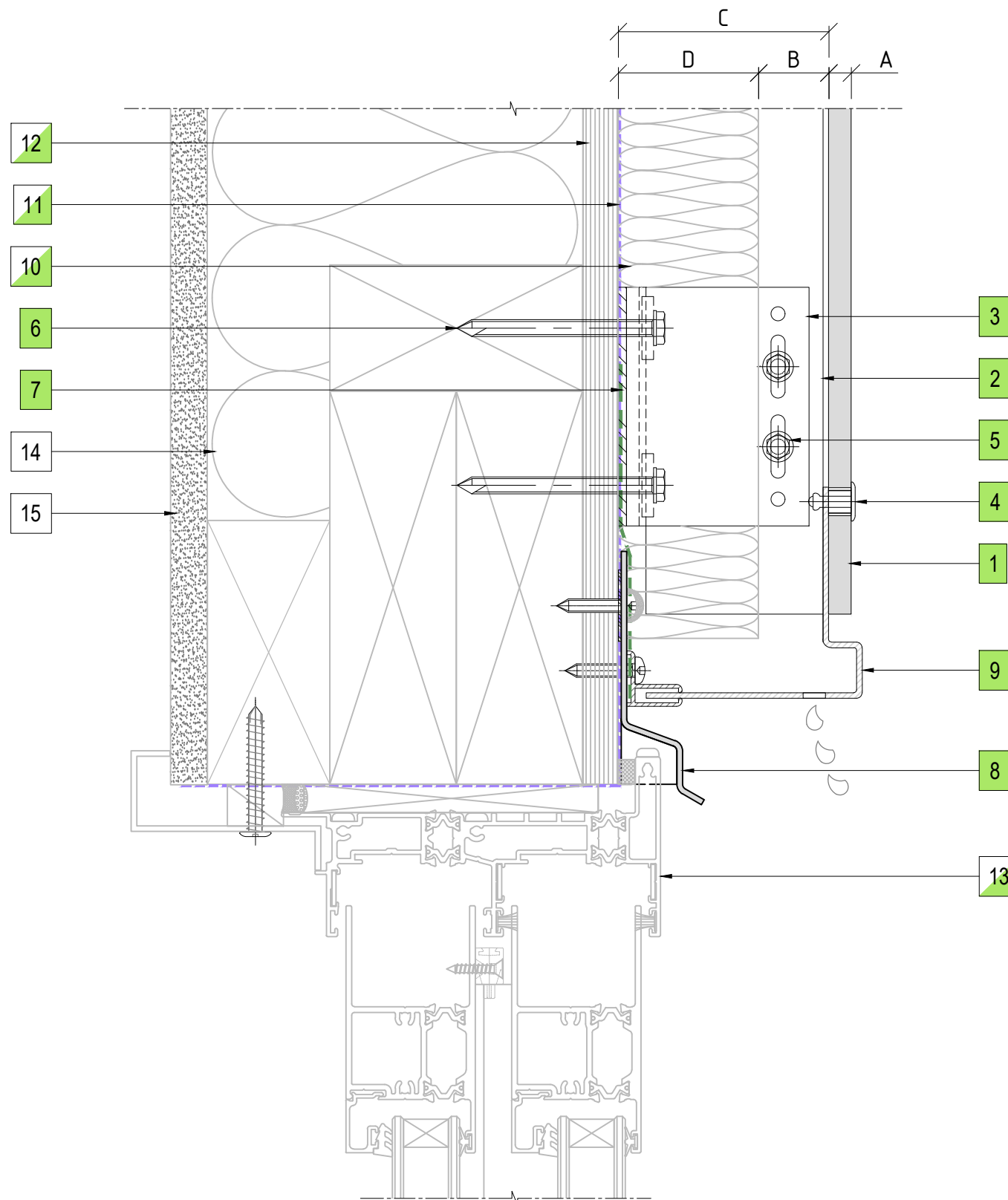
Cladding Type :  
**ENCLAD™ HPL - HIGH PRESSURE LAMINATE**

Support System :  
**ENCLAD™ EN01 - VISIBLE FIXED**

Detail Description :  
WINDOW HEAD DETAIL (SECTION VIEW)

Scale @ A3 : 1:2      Rev. : NOV 2022

System # :  
HPL-EN01-VF1      Detail # : 13



14 DOOR HEAD DETAIL  
ENCLAD™ HPL PANEL

PART OF THE THERMOSASH GROUP COMPANIES :



COPYRIGHT : THESE DESIGNS, DETAILS AND/OR SPECIFICATIONS AND THE COPYRIGHT THEREIN, REMAIN THE PROPERTY OF INSITE FACADES LTD.

DISCLAIMER : THESE DETAILS ARE PROVIDED FOR INDICATIVE PURPOSES ONLY. CONSTRUCTION/SYSTEM DETAILS CAN VARY DEPENDING ON PROJECT SPECIFIC SPECIFICATION AND ENGINEERING REQUIREMENTS. THE DESIGNER IS RESPONSIBLE FOR ENSURING DETAILS SATISFY ALL NEW ZEALAND BUILDING CODE CLAUSES. THE DESIGNER IS RESPONSIBLE FOR ENSURING BUILDING WRAPS, FIRESTOPS AND INSULATION/SPECIFICATION COMPLY WITH MANUFACTURERS RECOMMENDATIONS AND NZBC REGULATIONS. REFER TO INSITE WEBSITE FOR FULL TERMS AND CONDITIONS.

**LEGEND**

A	ENCLAD™ HIGH PRESSURE LAMINATE
B	20mm - 25mm NOMINAL VENTILATION ZONE (AIR GAP)
C	* 75mm SYSTEM CAVITY TO ACCOMMODATE 50mm THICK INSULATION
D	* 50mm INSULATION (OPTION BY INSITE) FIRE STOP (OPTION BY INSITE)
*	OTHER OPTIONS AVAILABLE (PROJECT SPECIFIC) 95mm SYSTEM CAVITY FOR 75mm THICK INSULATION 120mm SYSTEM CAVITY FOR 100mm THICK INSULATION

**PARTS LIST**

1	ENCLAD™ HPL PANEL
2	ENCLAD EN01 ALUMINIUM SUPPORT PROFILE
3	ENCLAD EN01 ALUMINIUM HELPING HAND BRACKET
4	ENCLAD PANEL FIXING (STAINLESS STEEL)
5	ENCLAD BRACKET TO RAIL FIXING (STAINLESS STEEL)
6	ENCLAD HOST STRUCTURAL FIXING (STAINLESS STEEL)
7	ENCLAD THERMAL ISOLATION PAD
8	ENCLAD ALUMINIUM FLASHING
9	ENCLAD ALUMINIUM CLOSURE
10	CAVITY INSULATION (OPTION BY INSITE)
11	BUILDING WRAP / MEMBRANE (OPTION BY INSITE)
12	RIGID AIR BARRIER / SHEATHING BOARD (OPTION BY INSITE)
13	ALUMINIUM DOORS, WINDOWS & REVEALS (OPTION BY INSITE)
14	WALL INSULATION (BY OTHERS)
15	PLASTER BOARD (BY OTHERS)

Cladding Type :

**ENCLAD™ HPL -  
HIGH PRESSURE LAMINATE**

Support System :

**ENCLAD™ EN01 - VISIBLE FIXED**

Detail Description :

**DOOR HEAD DETAIL (SECTION VIEW)**

Scale @ A3 : 1:2

Rev. : NOV 2022

System # :

**HPL-EN01-VF1**

Detail # :

**14**

**ENCLAD™ RAINSCREEN SYSTEMS**



101 STATION ROAD, PENROSE,  
AUCKLAND 1061  
NEW ZEALAND

P: +64 9 307 1529  
www.insitefacades.co.nz



