



**Ventilated Rainscreen
Specialists**



**Company
Profile**

SPECIALIST FACADE CONTRACTOR SINCE 1988

We have a proud history of involvement in some of the Auckland City's most iconic commercial facade projects.



About Us.

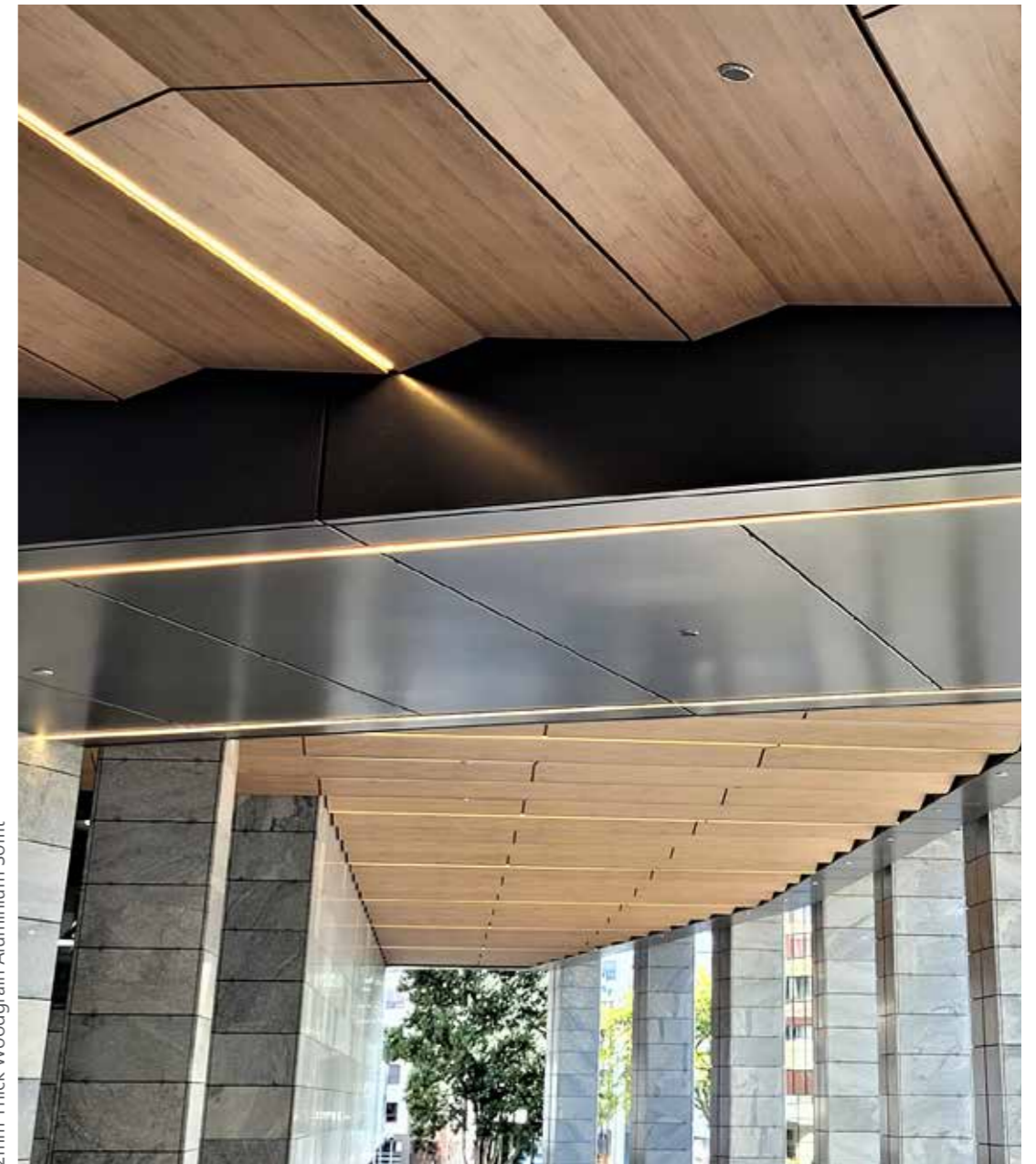
Insite Facades Ltd started as a commercial facade installation company in 1988.

Today we have evolved to offer design, engineering, supply and installation of our own facade products with maintenance services to increase longevity.

Our expertise is best utilised in early engagement to provide practical and technical support and product recommendations through a concept to completion approach.

Insite Facades Ltd has been a Thermosash Group Company since 2014.

Cordis Hotel Extension - Auckland
Design, Supply and Installation
2mm Thick Woodgrain Aluminium Soffit



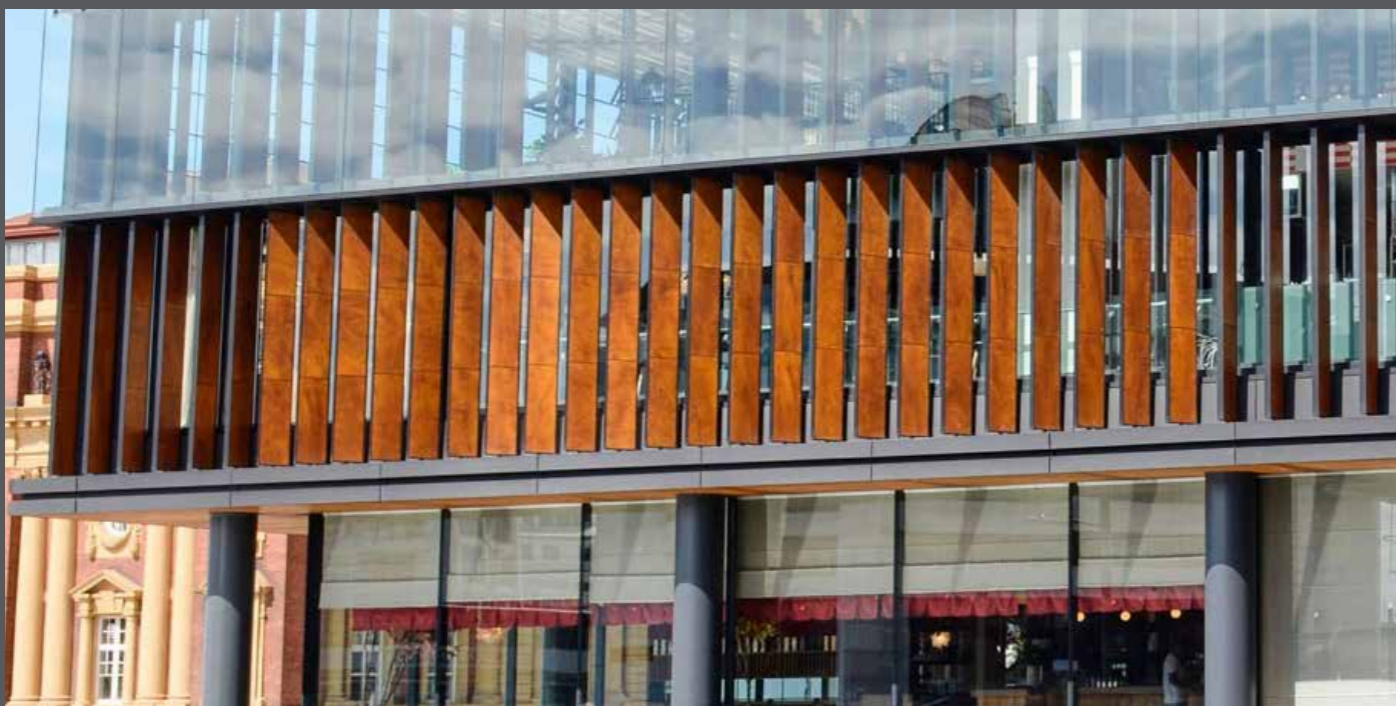
King's School, Auckland
Design, Supply and Installation
30mm Thick Terracotta Tiles and Baguettes



University of Otago - Dental Facility, Auckland
Design, Supply and Installation
10mm Fundermax Routed Design Cladding



Jervois Road Apartments, Auckland
Design, Supply and Installation
15mm Thick GRC Feature Cladding

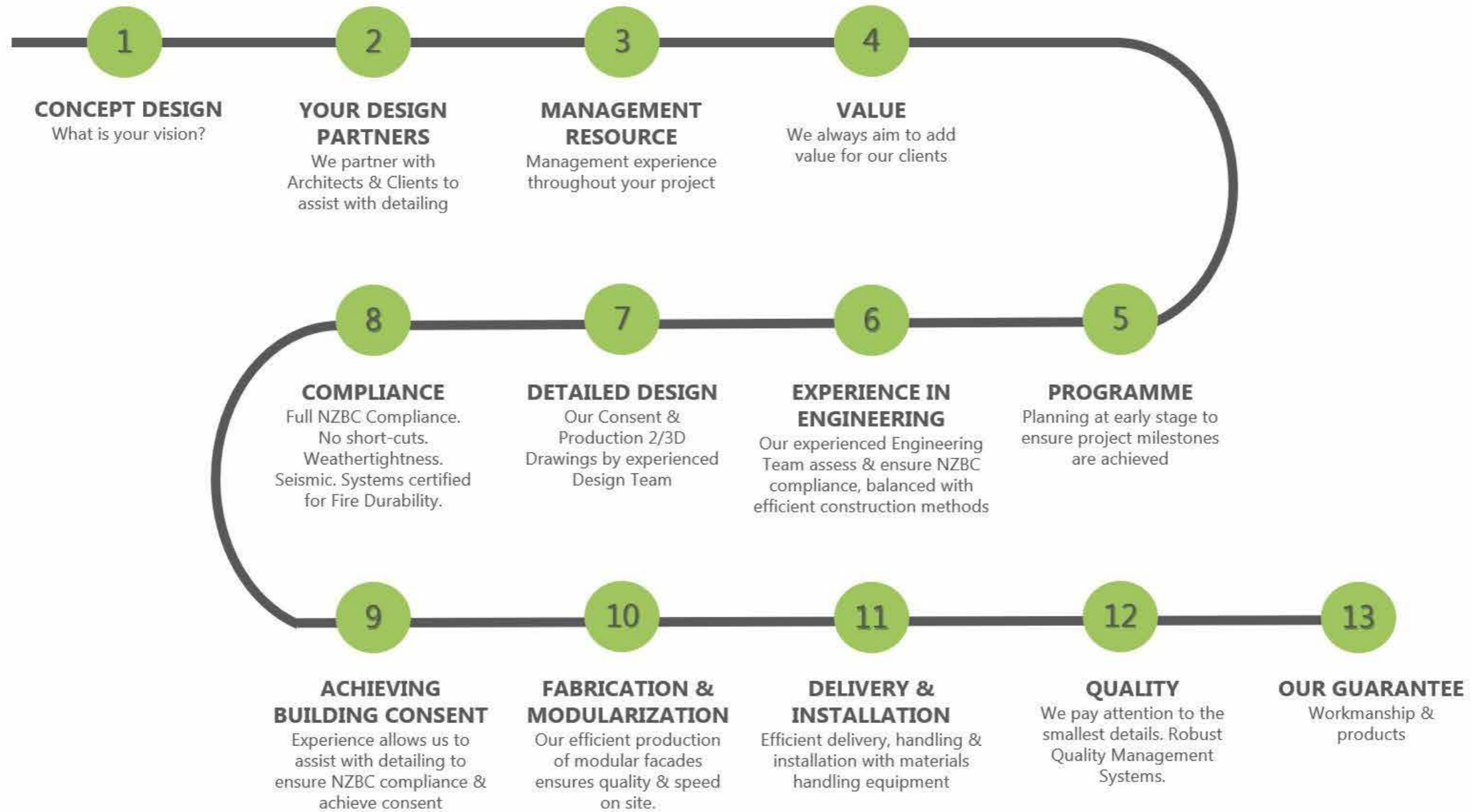


Commercial Bay - Feature Fins, Auckland
Design, Supply and Installation
8mm Prodema HPL Cladding



Southern Cross Hospital Northern Clinic, Auckland
Design, Supply and Installation
Aluminium Solar Shading and Support System

What we do. **Concept to Completion**



We deliver.
DO IT ONCE - DO IT RIGHT!

Insite Facades has developed engineered support systems specifically for rainscreen cladding. Our ENCLAD™ Rainscreen Systems support a wide range of cladding types and cavity depth requirements.

- **Non-combustible.** Bracket and rail profiles are extruded from 3mm solid aluminium.
- **B1 Structure.** Our support system is project specifically engineered to meet specification requirements.
- **B2 Durability.** Our extrusions are Duralloy powdercoated for enhanced durability.
- **H1 Energy Efficiency.** Our support system can accommodate various insulation thickness in the rainscreen cavity.
- **PS1 Producer Statement for Design** can be provided upon request.
- **PS3 Producer Statement for Construction** can be provided upon request.



EN01

The system is suitable for visible/discrete rivet or face fixing of thin smooth cladding materials - HPL, Solid Sheet, Extruded Aluminium Plank.



EN02

The system is suitable for secret clip mounting of Terracotta cladding tiles - Terracotta (horizontally laid)



EN03

The system is suitable for secret clip mounting of medium size/medium weight cladding material - HPL, Porcelain, Terracotta (vertically laid).



EN04

The system is suitable for secret hook on mounting of large size/heavy weight cladding materials - HPL, Solid Sheet.



EN05-FF

The system is suitable for secret hook on mounting of all cladding materials where floor to floor spans are required (i.e. non-load bearing walls) - Solid Sheet, HPL, Porcelain, GRC.



EN06

The system is suitable for secret hook on mounting of large size/heavy weight cladding materials where minimal cavities are permitted - GRC.

Solar shading solutions can limit solar gain and make your building or home more comfortable. If you are wanting to create some privacy or make a unique architectural statement on your facade, our Sunblade range can help you achieve your objective.

Insite Facades Ltd offer a concept to completion service including custom design assistance, engineering and full shop drawings, manufacture and installation of new build and retro fit solar shading solutions.

Select from our extensive range or we can design and engineer a solution specifically for your project.





High Pressure Laminate (HPL)



Sheet Metal



Glass-Fibre Reinforced Concrete (GRC)



Porcelain



Terracotta



Extruded Aluminium Planks

Materials.

- High Pressure Laminate (HPL)
- Sheet Metals
 - Solid Aluminium
 - Alucolux®
 - Perforated Aluminium
 - Stainless Steel
 - Copper
 - Solid Zinc
- Glass-Fibre Reinforced Concrete (GRC)
- Porcelain Tiles
- Extruded Aluminium Plank
- Terracotta Tiles / Planks
- Feature Fins & Solar Louvres



Capability.

Insite Facades brings commercial facade experience & specialist equipment to deliver site installation safely and efficiently.





CONTACT US TODAY

INSITE FACADES LTD
101 Station Road
Penrose, Auckland, 1061
T: +64 9 307 1529
E: info@insitefacades.co.nz

www.insitefacades.co.nz

